

The Luxury Edition

A curated collection of the world's finest properties

Volume IV

www.christiesrealestate.com

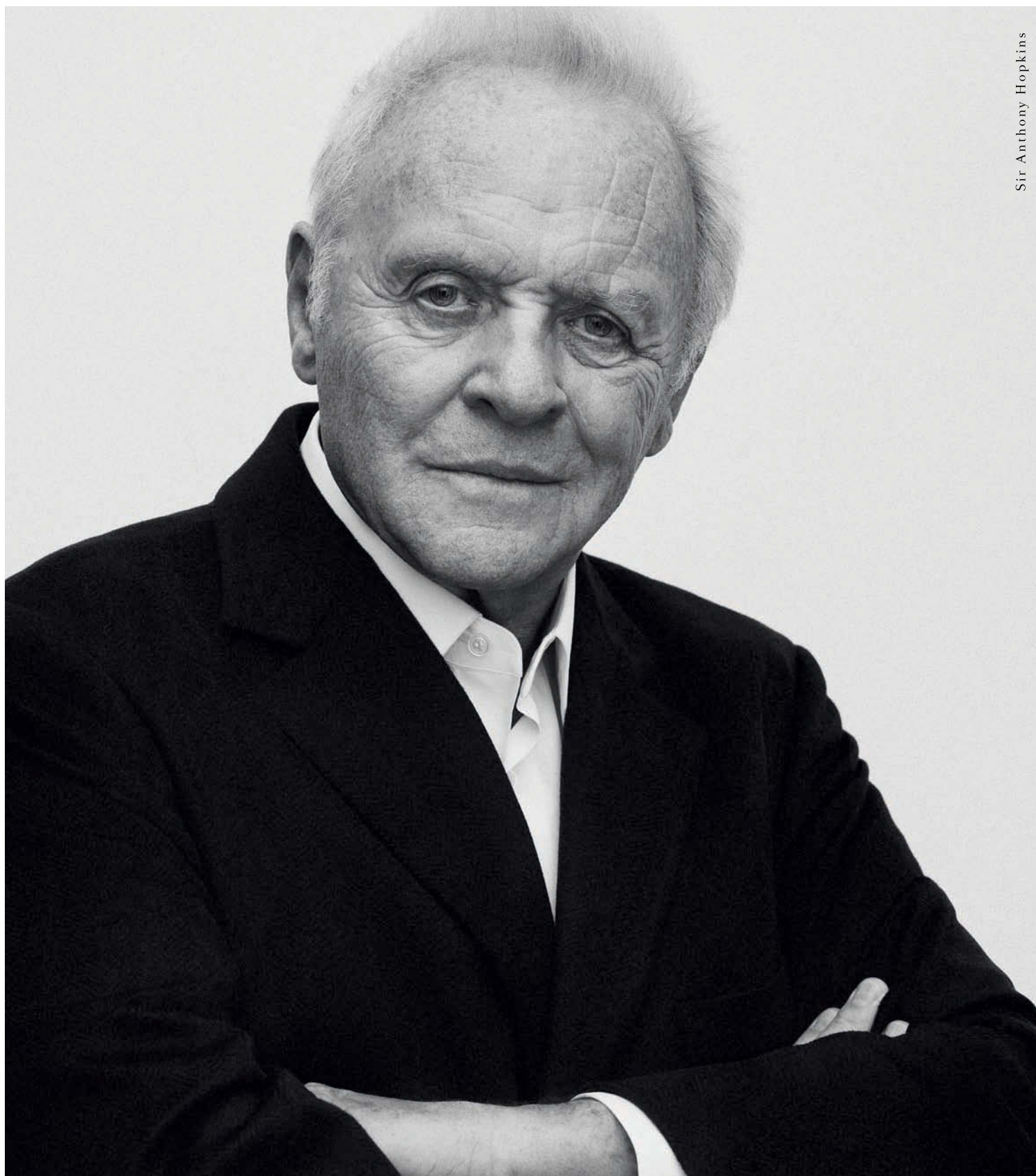


CHRISTIE'S
INTERNATIONAL REAL ESTATE



TAILORING LEGENDS SINCE 1945

Sir Anthony Hopkins



Brioni
ROMA



Freak Blue Cruiser

Flying carousel-tourbillon

7-day power reserve

Silicium technology

ulyse-nardin.com



THE ETERNAL MOVEMENT

Ulysse Nardin, from the movement of the sea to the perpetual innovation of Haute Horlogerie. For over 170 years, the powerful movement of the ocean has inspired Ulysse Nardin in its singular quest: to push back the limits of mechanical watchmaking, time and time again.

ULYSSE NARDIN
SINCE 1846  LE LOCLE - SUISSE



LA ESMERALDA TOURBILLON, PINK GOLD CASE, 44 MM



GP GIRARD-PERREGAUX

SWISS HAUTE HORLOGERIE SINCE 1791

**There is no mystery
about a Girard-Perregaux,**
*simply more than two centuries of craftsmanship
and a perpetual commitment to perfection.*

www.girard-perregaux.com

50 *Pomellato*
MILANO
SINCE 1967



Pomellato

RITRATTO COLLECTION

NEW YORK | 212.879.2118
CHICAGO | 312.649.9720
MIAMI | 305.690.7726

pomellato.com

The Luxury Edition

A curated collection of the
world's finest properties

//

Volume IV

CHRISTIE'S
INTERNATIONAL REAL ESTATE

A truly luxurious home is so much more than location and design. It's the feeling you get when you arrive at the entrance. The visceral impact of the landscape or skyline. The lifestyle it affords. The sense of complete privacy and comfort. The sense of being at one with, yet separated from, the world around you. It's a place to indulge in the luxuries that are personal to you—whether that's waking up every morning to a breathtaking view, marveling at the most exquisite interior details, having the facilities to entertain at a grand scale or, simply, enough space to get lost in.

In this, the fourth in *The Luxury Edition* series from Christie's International Real Estate, we invite you to take a tour inside some of the world's most desirable homes through more than 100 pages of stunning photography and fascinating stories.

Explore the dramatic Jacobean estate Darlington—"America's Versailles"—a short hop from New York City. Discover the masterpiece of celebrated designer Pierre Yovanovitch in the heart of Paris's 7th arrondissement. And get absorbed in the romance of all 16 properties in this volume—the very best in design, locale, grandeur, and privacy. Each defines luxury in its own unique way.

Together with our leading global network of luxury real estate brokerage firms, all highly regarded experts in their respective markets, we offer you these distinctive and exceptional properties. I hope you enjoy your private tour.

With warmest regards,

Dan Conn
Chief Executive Officer
Christie's International Real Estate

//

Château Soligny: A glamorous Belle-Epoque mansion on the French Riviera, offering stunning 180-degree sea views of Cap d'Antibes and the Bay of Cannes.



FREDERIC VASSEUR

//

Seend Park: Nestled in the Wiltshire countryside, UK, overlooking Salisbury Plain, this Grade II-listed property, with all its Georgian details, is the picture-postcard English estate.



ALEXANDER JAMES

The world's finest properties

From the exclusive affiliates of Christie's International Real Estate

//

14

Romantic restoration

Just 25 miles from Manhattan, palatial Darlington is a truly unique Jacobean mansion, restored to perfection.

//

22

Design for living

A perfect balance of drama and refinement, this Paris townhouse showcases the genius of Pierre Yovanovitch.

//

28

Sitting pretty

Deep in the UK's Wiltshire countryside, overlooking Salisbury Plain, this Georgian estate is full of English charm.

//

34

Ecological reinvention

This stunning Art Deco property has been deftly restored with eco features, leading the green way in Toronto.

//

40

Sardinian sanctuary

With hydro-massage hot tub and infinity-edge pool, this is a Sardinian sanctuary on the Costa Smeralda.

//

46

The call of the Wyld

Famous visitors from far and wide have flocked to this French-style hideaway in Lake Forest, Illinois.

//

52

Castle by the sea

Built during the French Riviera's golden age, Château Soligny in Cannes is the epitome of *La Belle Époque*.

//

58

Palace among the palms

A classical-style palazzo built by master craftsmen stands proud as the largest estate in Los Angeles's Beverly Park.

//

64

Harbor heights

Overlooking Monaco harbor, the Grand Prix race track, and glittering Côte d'Azur, this lofty apartment exudes glamour.

//

70

Rainforest playground

On the rugged Bute Inlet of British Columbia's western coast, Fawn Bluff is the jewel of the Emerald Edge.

//

76

On top of the world

High above Ibiza Town, this terrace-wrapped villa with infinity-edge pool boasts sea views from every room.

//

82

Cloaked in blue

With commanding views over Lake Travis, Texas, this country house with equestrian center is a recreational retreat.

//

88

In a class of its own

Gazing over New Jersey's Manasquan River, yet a short drive from New York, this home's location is unrivaled.

//

94

New kid on the block

Situated in London's sought-after Chelsea, every detail of this thoroughly modern home has been carefully considered.

//

100

Set in stone

This timeless country manor is a rural idyll within strolling distance of buzzing Montréal and cross-country ski trails.

//

106

Reflected glory

Surrounded by mirror-like water, this château is a shining example of Louis XVI-style architecture close to Paris.

//

DARLINGTON
MAHWAH
NEW JERSEY
UNITED STATES

www.specialpropertiesres.com



Romantic restoration

Meticulously restored to its original grandeur, and incorporating every update for modern life, this Jacobean estate marries two centuries to create a one-of-a-kind home, just 25 miles from Manhattan

//

PHOTOGRAPHY BY LAURA MOSS
WORDS BY STEPHANIE JONES





Darlington, a unique mansion of pure Jacobean precedent, was commissioned in the early 1900s at the behest—and instruction to “spare no expense”—of businessman and socialite George Crocker. He and his wife owned a mansion at 64th Street and Fifth Avenue in New York, but yearned for a country home built for entertaining that would elevate them to the pinnacle of New York society. Crocker fell in love with Bramshill House, a Jacobean estate in Hampshire, England, and with this as a model, enlisted the services of architect James Brite to bring his vision to life.

Finished in 1907, and built of Harvard brick and Indiana limestone—a huge H shape flanked by pergolas—Darlington was indeed palatial. Styled with acute attention to detail, standout features included a two-story inglenook in the great hall, and a library

roof painted by Tiffany Studios’ James Wall Finn, whose other creations include a mural at the New York Public Library, depicting billowy clouds.

Set in the Ramapo Valley in Mahwah, New Jersey, Darlington carried the gravitas of a centuries-old build. Yet with such features as steam heating, integrated intercom systems, and elevators, it was way ahead of its time, prompting *The New York Times* to describe it as “the most modern home in the U.S.”

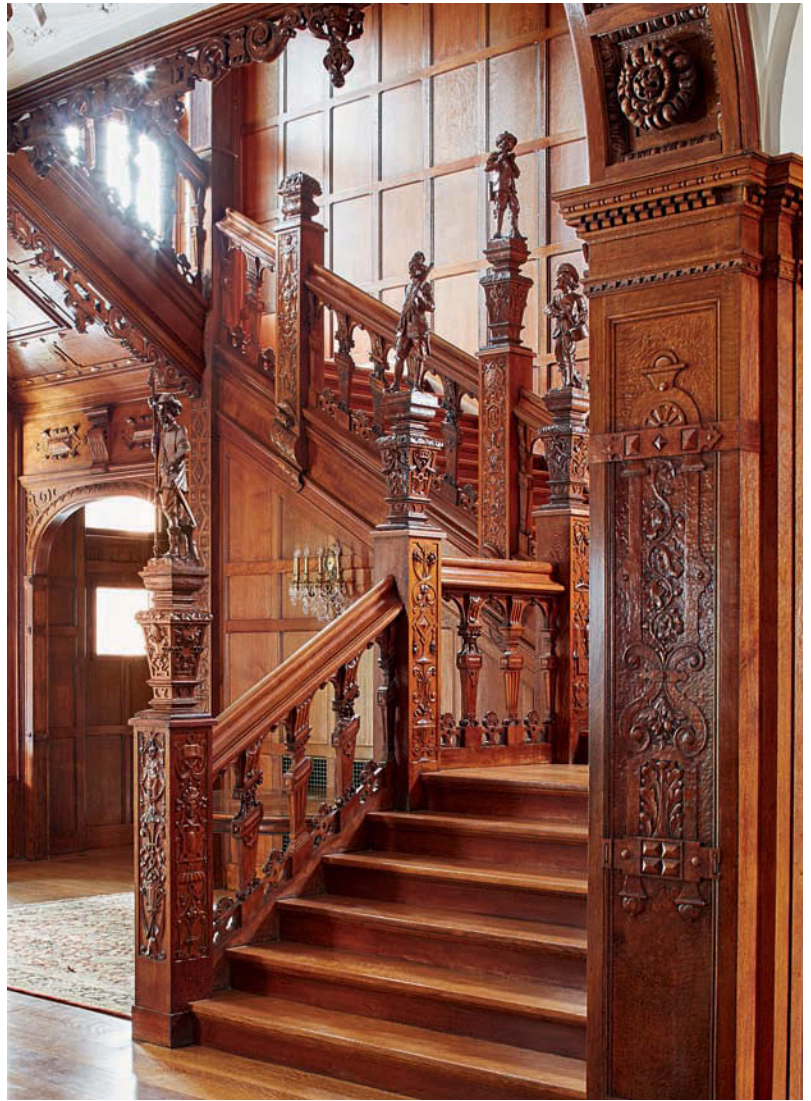
A century and a seven-year renovation later, thanks to Ilija Pavlovic, president and CEO of Special Properties Real Estate Services LLC, an affiliate of Christie’s International Real Estate, Darlington can again command such lofty headlines. “My aim was to preserve the original beauty, but make it a home for the 21st century,” says Pavlovic, who acquired the property in 2008.

“We stripped back the floors and walls to the original and rebuilt with a forensic-style attention,

//

Standing proud: Listed with the National Register of Historic Places, today’s 58-room Darlington spans four floors and measures 50,000 square feet. It has 21 bedrooms, 29 bathrooms, an afternoon tea room, as well as a new restaurant-style kitchen equipped to serve 250 diners.

“My aim was to preserve the original beauty, but make it a home for the 21st century.”
Ilija Pavlovic



using the same materials,” Pavlovic explains. “All 18 stone fireplaces were refurbished and each of the 476 windows was replaced and approved by the state historic preservation office. And all mechanical systems—the original Aeolian player pipe organ included—were renewed.”

Leisure facilities such as game and poker rooms, a cinema room, cigar room, wine cellar, and a spa and sauna were added, bringing the mansion up to date for modern living. It may have all the amenities of a five-star hotel, but, says Pavlovic, “It’s very important Darlington is seen as a home.”

Wonderfully nostalgic, thoroughly modern, and a half-hour drive from the Big Apple, Darlington is both a talk-of-the-town and country-retreat home.

//

Discover more about this special property, including further photography, at www.christiesrealestate.com/c44





// HISTORY REPEATING ITSELF

The restoration employed original materials—marble, American white oak, English oak, cherry, Circassian walnut, English walnut, and Californian redwood—some of which were unique in the United States when first used. Bespoke furniture was designed by Francesco Molon, whose résumé includes presidential palaces and The Ritz-Carlton New York. It was crafted to echo the original wood carving of master carver John H Elliott, which features on the ceilings, walls, and stairways.

“We stripped back and rebuilt with a forensic-style attention, using the same materials.” Ilija Pavlovic



//
A countryside escape:
Surrounded by manicured
lawns and rare species of
trees, Darlington offers the
ideal spot for relaxing
and entertaining. Modern
amenities include a wine
cellar, and for the active,
there is a swimming pool,
cabana, and tennis court.

//

Attention to detail: All the property's once state-of-the-art features were painstakingly restored and renovated, including the stunning Aeolian player pipe in the great hall, using authentic materials.



Design for living

This stunning Paris home cemented Pierre Yovanovitch's position as one of the world's best contemporary interior designers—and helped catapult him into the AD100—the Architectural Digest's hall of fame

//

WORDS BY XENIA TALLOTIS



//

TOWNHOUSE

CHAMP DE MARS

PARIS

FRANCE

www.belles-demeures-de-france.com





I am in love with this house,” says Marie-Hélène Lundgreen, of Belles Demeures de France, the international arm of Daniel Féau Conseil Immobilier, an exclusive affiliate of Christie’s International Real Estate. “As a real-estate consultant, I see many exquisite homes, but this one is an absolute dream. It is a masterpiece by Pierre Yovanovitch, one of the world’s greatest contemporary interior designers, and can accurately be described as an artwork.”

The property Lundgreen is talking about is the 19th-century *hôtel particulier*—or townhouse—that Yovanovitch gutted and remodeled, turning the former political-party headquarters into a resplendent four-bedroom home with expansive windows and a glass dome skylight that allow light to stream through every room. Among the key features of the property, which spans 10,678 square feet, are a grand yet comfortable living area; a magnificent, sculptural staircase; and a huge, 1,000-square-foot master suite.

Located on the Champ de Mars, in Paris’s desirable 7th arrondissement—packed with Michelin-starred restaurants, gourmet food markets, and within easy walking distance of the Musée d’Orsay—the house bears Yovanovitch’s hallmarks, namely his seamless creation of a contemporary home within a listed historic building.

Also integral to his aesthetic is the view, which Yovanovitch says is “like an extra room,” and which he considers in his plans, often designing around it.

A black-and-white marbled, Art Deco-inspired entrance hall leads through to a graceful salon and dining room, which open onto landscaped gardens and a kitchen softened by fluid curved lines.

The upper floors comprise a vast, 1,000-square-foot reception room—perfect for entertaining—the bedrooms, dressing rooms and bathrooms, a guest suite, and a study, while below, in the half-basement are a pool, gym, and hammam, as well as a laundry and self-contained staff apartment.

“It is hard to isolate one area that I like more than any other, because the whole is impeccable,” says Lundgreen. “But sitting out on the balconies and watching the sun rise or set over Paris is really quite special. I also love the glass dome—there is a very beautiful mosaic water feature, which catches the sun streaming down—I love the way that reflects light. But for me, the ‘exceptional’ factor is the sense of harmony that Yovanovitch has created. He has devised a set piece—a true design for living.”

//

Discover more about this special property, including further photography, at www.christiesrealestate.com/c42

//

Incredible views: Huge floor-to-ceiling windows open onto balconies that look out over Paris’s premier green spaces, the Champ de Mars, and across to the city’s most famous symbol, the Eiffel Tower.



*"The 'exceptional' factor is the sense of harmony that Yovanovitch has created."
Marie-Hélène Lundgreen*



//

STAIRS WITH A TWIST

Pierre Yovanovitch had carte blanche regarding the townhouse's design, and the result is a dazzling showcase for his style. Taking center stage is the much-admired 100-foot staircase, twisting like a helix upwards to the other floors. "It is a piece of sculpture," says Marie-Hélène Lundgreen of Belles Demeures de France. "Again it is something that Yovanovitch is known for—he creates swooping staircases full of drama and beauty."





//

Holistic philosophy: The property features custom-designed floors, lighting, doors, and furniture, reflecting the belief that each project must be realized as a whole. It is likely that much of the furniture will remain for the new owners to enjoy.

Sitting pretty

Located in a picture-perfect English village, Seend Park in Wiltshire has it all—royal connections, Georgian heritage, and access to town and country

//

PHOTOGRAPHY BY ALEXANDER JAMES
WORDS BY EMILEE TOMBS



//

SEEND PARK
WILTSHIRE
ENGLAND
UNITED KINGDOM
www.struttandparker.com





Deep in the Wiltshire countryside, the former wool merchant village of Seend provides the perfect backdrop for a glorious retreat. At the eastern end lies Seend Park, a Grade II-listed 26.4-acre Georgian estate. Currently on the market with Strutt & Parker, the exclusive affiliate of Christie's International Real Estate in the region, Seend Park offers the appeal of countryside living, and is within two hours of both Bath and London.

"Seend is unique," says Edward Lucas of Strutt & Parker. "It retains the essence of what makes a traditional British village—with a school, post office, church, and pub all within walking distance. What's more, every house is incredibly pretty."

Primarily built between 1620 and 1760, Seend Park has a 10-bedroom, five-bath main residence, a separate four-bedroom lodge, and outbuildings comprising stables, an apple store, and tractor room currently used as an office.

Rooms lead off the grand entryway from right to left, and an oak staircase leads to a well-proportioned landing on the first floor. Standing on the threshold, the eye is led through to the back door, and out to the property's expansive lawn, paddocks, and garden. The garden is a showcase of white, pink, blue, and green that houses two rose gardens, a white garden,

topiary lawn, and a greenhouse where old grape vines creep up the walls and a glut of tomatoes grow.

Inside, Seend Park's current owners have made every effort to restore and enhance the property's Georgian details, preserving the original fireplaces, wood floors, shutters, and ornamental ceilings, and making adjustments to suit a modern lifestyle.

The farmhouse-style kitchen has been returned to its original location adjacent to a large butler's pantry, while at the back of the property, the formal drawing room, sitting room, study, and dining rooms are all flooded with light, thanks to expansive windows that look out onto a well-manicured lawn.

Beyond this, a ha-ha, or cleverly hidden ditch, references the area's agricultural heritage, and further still, looking out across Salisbury Plain, an ornamental canal leads to a lake with a jetty, on which nesting Canada geese and families of fallow deer can often be seen.

Despite the age of the estate, there have only been a handful of owners, and their positive impacts on the house are keenly felt today. "From the minute you step over the threshold of the property's Tudor porch, it feels like home," says Lucas.

//

Discover more about this special property, including further photography, at www.christiesrealestate.com/c45

//

Window on the world: Paths include one bordered by lavender, herbs, and apple trees (above, left), leading to a small stone loggia with a porthole that looks out across historic Salisbury Plain.



*"From the minute you step over
the threshold of the property's
Tudor porch, it feels like home."
Edward Lucas*



//

RICH HISTORY

Seend Park's illustrious former owners include William Somner, author of the first Anglo-Saxon dictionary, and Edward Seymour, the eighth Duke of Somerset, whose crest appears above the paneled front door. Following his death, his widow Mary added a charming rendered stone extension to the eastern side of the property, commemorated with a plaque inscribed with her name and dated 1760. The estate remained in the possession of the dukes of Somerset well into the 19th century.



//
Modern additions: A former sitting room is now an inviting library with floor-to-ceiling bookshelves on two walls, while the splendid gardens include an elegant patio edged with topiary.





//
16 GLEN EDYTH PLACE
CASA LOMA
TORONTO
CANADA
www.chestnutpark.com



JORDAN PRUSSKY

Ecological reinvention

Resting on the rim of a ravine above downtown
Toronto is a magnificent Art Deco property,
reinterpreted for the age of sustainability

//
PHOTOGRAPHY BY ROBIN STUBBERT
WORDS BY AILEEN SCOLAR



Cities are not always kind to the environment. But if you choose to make your home in Toronto—whose residents embrace the outdoors and choose to explore the city’s treasures on foot—you can embrace sustainability in a meaningful way, and quietly help to engineer a greener future. That is just what owner David Daniels, Toronto’s preeminent polymath and sustainable property developer, has done. His commitment to the arts, architecture, healthcare, and education was inextricably bound into his decision to restore 16 Glen Edyth Place in 2005, under the direction of eco-architect Paul Dowsett.

But this is not the first time the property has been infused with passion and vision. The house was originally designed in 1935 by Mackenzie Waters, a progressive architect who created Toronto’s sporting landmark, Maple Leaf Gardens.

His ethos is epitomized in the home’s understated buff brick exterior, sweeping terrazzo staircase, and curvilinear-domed vestibule ceiling. These notable Art Deco details have been retained with care by Daniels and Dowsett, and enhanced with the introduction of discreet eco features, such as geothermal heating, solar panels, and horizontal light-shelf windows. They have been used alongside

some imaginative upcycled materials and this “eco-deco” effect is matched by a stunning location.

“Only four original properties still exist on the edge of Nordheimer Ravine, and the view across Toronto is the kind you get from a 55-story penthouse. But here you enjoy it from a secluded location, overlooking beautiful landscaped gardens and a veil of trees,” says Jimmy Molloy of Chestnut Park Real Estate Limited, Brokerage, the exclusive affiliate of Christie’s International Real Estate in the region.

Yet for all its seclusion, 16 Glen Edyth Place is close to the center of Old Toronto. Casa Loma, a stunning castle, and the Spadina Museum, offering a glimpse of early 20th-century life, are just minutes away, as is the exclusive shopping district of Bloor-Yorkville.

“Many of Toronto’s greatest properties have a real connection to the city and that’s certainly true of this house,” says Molloy. “You can walk to dinner at the Four Seasons Hotel in little more than 15 minutes.”

While this home is now determinedly sustainable, its spirit is shaped by its Art Deco origins. The combination of two architectural visions, 75 years apart, creates a contemporary home that successfully interprets modernism for a new generation.

//

Discover more about this special property, including further photography, at www.christiesrealestate.com/c56

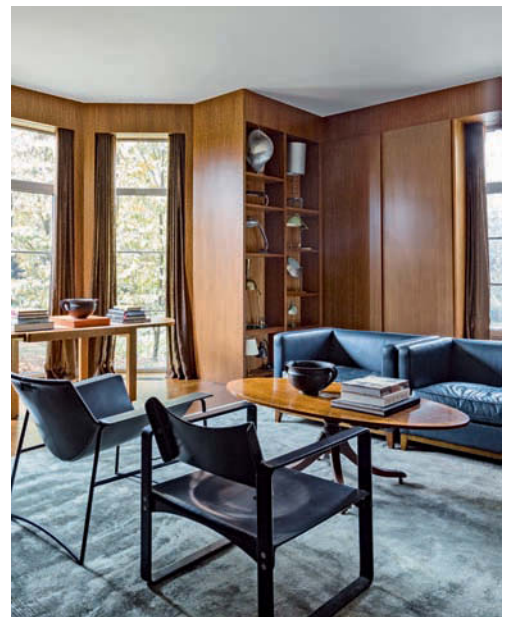
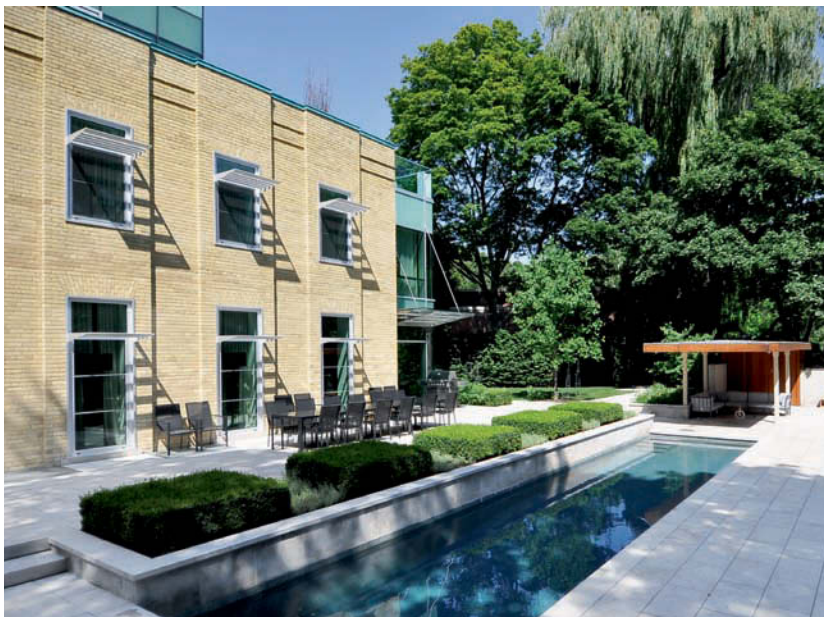
//

Graceful reuse: Examples of elegant upcycling include a theatrically inclined chandelier above the main staircase (top), created from antique linens and vintage lamp forms.

*"Toronto's greatest properties
have a real connection to
the city and that's certainly
true of this house."*

Jimmy Molloy

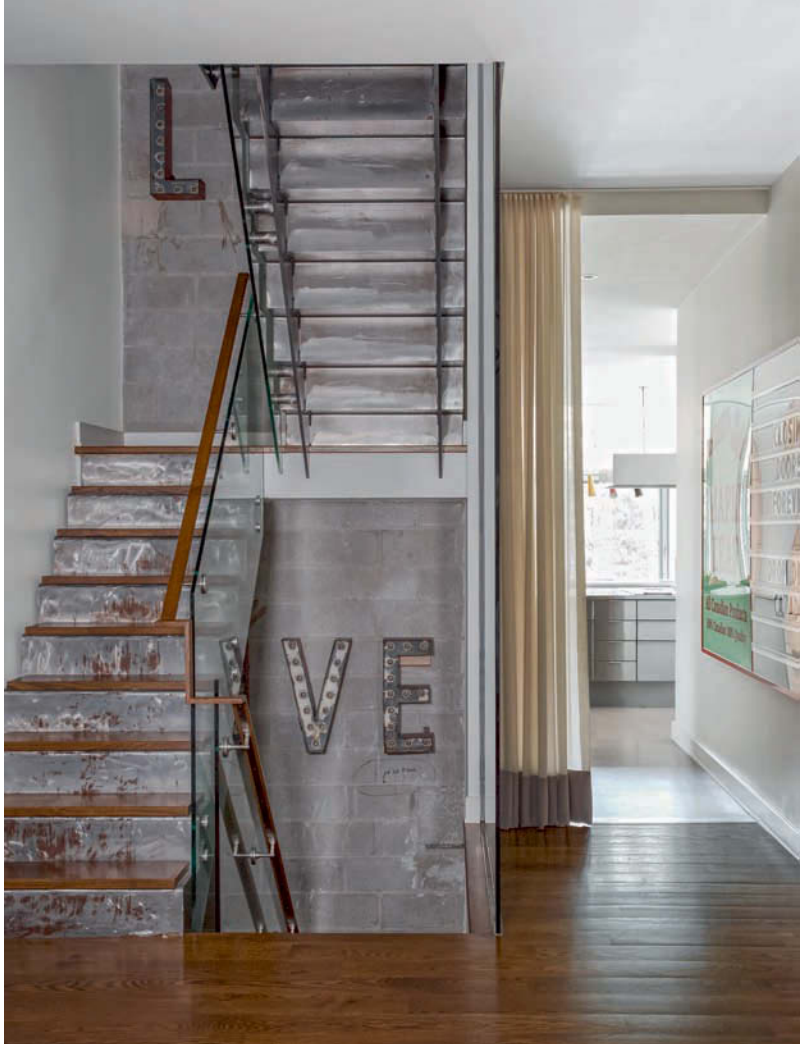






// LEADING THE WAY

Since its completion in 2010, 16 Glen Edyth Place has played a pivotal role in Toronto society. The renovated ballroom has hosted fundraising events for charities and arts organizations supported by owner David Daniels, and the capacious dining room can accommodate scores of guests. Indeed, the reenergizing of this Art Deco property has created a ripple effect that goes far beyond its own walls. "This house was ahead of its time in many ways," agrees Jimmy Molloy of Chestnut Park. "It was the first premier property in Toronto to take sustainability seriously without compromising on attention to detail, so it has been very influential."



Sardinian sanctuary

One man's 14-year labor of love has resulted in
an oasis on Sardinia's glittering Costa Smeralda—
a contemporary home truly at one with nature

//

PHOTOGRAPHY BY FREDERIC VASSEUR
WORDS BY JOSH SIMS



//

LA GARIBALDINA
COSTA SMERALDA
SARDINIA
ITALY

www.christiesrealestate.com



*“It’s both vibrant and peaceful,
all at the same time. It’s
always given me energy.”*
Gaetano Poli



Space is the highlight of this stunning retreat near San Panteleone, on the Costa Smeralda—that playground of the jet set ever since the Aga Khan created it during the 1960s. La Garibaldina in northern Sardinia is a vast and impressive estate, benefiting from a temperate climate all year round.

Situated on 18.5 acres, the property comprises a 10-bedroom residence spanning some 10,212 square feet; one main residence (4,112 square feet) and an additional five residences of between 646 and 2,960 square feet.

But it’s the space outside—between the buildings—where La Garibaldina really makes its mark. “There are several buildings, but the point is that they’re all very much part of nature,” says Gaetano Poli, La Garibaldina’s owner and the man who built up this oasis step by step over a 14-year period from 2001, with careful consideration.

Alongside the two 1,722-square-foot allotments, for example—with tomatoes, eggplant, zucchini, peppers, and watermelon all growing well—there’s a grove of 53 olive trees, cork trees, rocky hideaways, and high spots with great views over the island’s archipelago, even as far as Corsica on a clear day. And, given the lack of light pollution here, well into the Milky Way on a clear night.

“We always wanted to respect nature, and to set the buildings within it,” Poli adds. “There was a lot of planning—how the buildings felt when it was windy, how they felt when it was a full moon, and during sunset... Understanding the natural rhythms of the plot gave me the confidence that the estate as I imagined it could be built—that the buildings could be married with both the landscape’s softness and wildness.”

It’s why, he points out, there isn’t any manicured lawn—“which would look so fake here,” he says. “It was also important that the ‘new’ buildings had lots of Sardinian character,” says Poli, “although Sardinians tend to be quite short, so we’ve had to adapt some historic details for taller people.”

“We wanted a ‘rose in a desert,’ as one Sardinian described it, not a modern, techy house, which to my mind can be overly hygienic and rather soulless.”

“Sardinians visit and say the estate represents the real Sardinia,” says Poli. “It’s a powerful, vibrant, and peaceful place, all at the same time. There’s always some corner of the property that will make you feel good. It has always given me a feeling of energy—I hope I can take this with me.”

//

Built to last: The property echoes the traditional Sardinian, slope-roofed stazzu or shepherd’s house, respecting the historic style in its use of thick walls and local, hand-made terracotta tiles both inside and out.

//

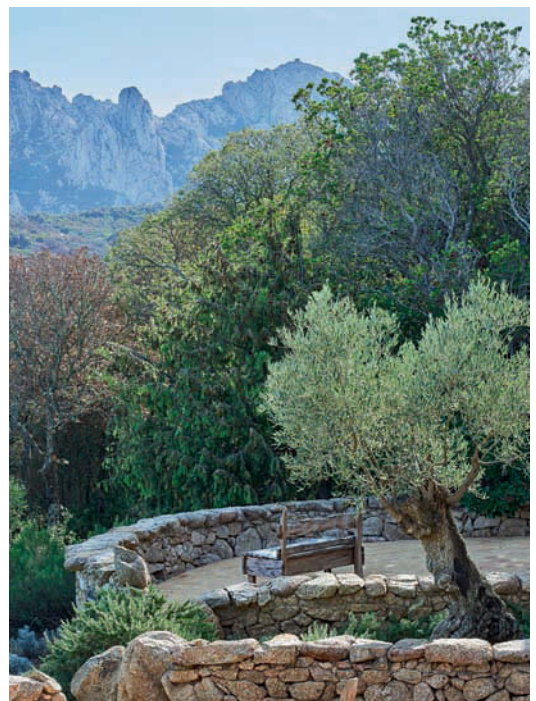
Discover more about this special property, including further photography, at www.christiesrealestate.com/c49





//
A WORLD OF WELLNESS

La Garibaldina is an idyllic retreat: there's the hot tub with hydro-massage; 57-foot-long heated infinity-edge pool with electrolysis filtration; gym; and a barbecue area with covered lounge and fully-equipped kitchen. The timeless rustic charm of the interior—all neutral tones, stone, wood, and rough-hewn metals—also offers respite from the breakneck pace of the outside world. If wellness is the philosophy of the 21st century, then this property is a sanctuary in Sardinia.



//

In keeping with tradition:
Reclaimed wood was used for the ceilings and floors, as well as architectural salvage for the likes of doors, cherry-picked from dealers on the Italian mainland.





//

WYLDWOODE
LAKE FOREST
ILLINOIS
UNITED STATES
www.conlonrealestate.com



The call of the Wyld

Country house retreat Wyldwoode has played host to celebrities, cabinet members... even an astronaut. Nestled in Lake Forest and overlooking Lake Michigan, this French-style hideaway is a place where everyone can feel at home

//

PHOTOGRAPHY BY NGOC MINH NGO
WORDS BY STEPHANIE JONES

A French-style country retreat set among eight-and-a-half acres of glorious woodland, secluded from the road three seasons out of four, and yet not five minutes from the shores of Lake Michigan.

Wylldwoode is most certainly *magnifique*.

The estate was built in 1916 for steel tycoon Clyde Carr by architect Harrie T Lindeberg, who designed several homes in the Lake Forest area and whose work defined the American Country House era. Influenced by European movements and periods such as Arts and Crafts, Beaux-Arts, Norman, and Tudor, Lindeberg planned homes in tune with the

surrounding landscape—there was no one style. It was about individual spirit and 55 N Mayflower Road is the exemplar of this. Bucking the trend of similar and more streamlined French rural estates, Wylldwoode is a charming melange of brick and timber, with a pitched slate roof. Its Y-shaped plan affords the property its privacy—from Warren Manning’s landscaped gardens to the east and west, to woodland to the south. Meanwhile, a curved driveway, screened by planting, leads to the entrance—a monogrammed “CC” wrought-iron arch by German craftsman Oscar Bruno Bach.

Today’s owners are Barbara and Barry Carroll. They arrived at the eight-bedroom, 13,500 square-



//

Roll call: Actor Robin Williams, the Osmond family, and former Secretary of Education Terrel Bell have all attended parties at the property.

"The workmanship is breathtaking. There are crown moldings on every level." Barry Carroll





foot property for an estate sale in 1987, hoping to pick up a piece of art or a unique treasure. Instead, they bought the whole estate and found a trove.

Little was done before they moved in, apart from stripping floors in three of the rooms. “They’d been painted over, but underneath was this beautiful herringbone and butterfly-pegged parquet,” Barry says. “The workmanship here is breathtaking. There are crown moldings on every level, a spiral staircase, curved wainscoting, bays, and marble mantels. We even have an oval office!”

Ceiling beams and a Tudor arch over the dining-room fireplace pay homage to Lindeberg’s inspiration. But where manor houses of a comparable period can be ill-lit and gloomy, Wyldwoode is infused with

light. Built on three levels, the first boasts floor-to-ceiling original sash windows, glass doors, and an elegantly tiled gallery. Two rooms at the top have been converted—one as a television and music room, the other as the High Frontier Bar.

“I’d wanted a bar and I’m a space nut,” Barry says, “so, it’s full of astronaut memorabilia—like a replica Sputnik flight simulator. Apollo 13’s Jim Lovell christened it by bouncing a tub of Tang off the floor!” Space enthusiast or not, the appeal of this home is infinite.

//

Discover more about this special property, including further photography, at www.christiesrealestate.com/c52

//

Built for entertaining: As well as hosting debutante balls, alma mater dinners, and musical chamber groups, Wyldwoode has served as a wedding venue for four of the Carrolls' five children—one of whom got married on the estate's beautiful lawn.



//

INCREDIBLE INSIDE AND OUT

The grandeur of the estate's interior is matched by the wonders of its exterior. A timber Juliet balcony on the east façade overlooks the lake, while bluestone terraces and garden walls are cloaked in a microclimate of established specimen plants. There is a swimming pool and restored Georgian-style pool house with equipment room, plus biking and hiking trails. These wind through the forest and are punctuated by stonework surprises, picnic spots—even the appearance of deer.

//

CHATEAU SOLIGNY
CANNES
COTE D'AZUR
FRANCE
www.michaelzingraf.com





Castle by the sea

Conceived at a time of cultural innovation
and boundless optimism, Château Soligny
is a jewel in the French Riviera that embodies
the *joie de vivre* of La Belle Epoque

//

PHOTOGRAPHY BY FREDERIC VASSEUR
WORDS BY NICOLA VENNING

Sitting at the end of a long driveway in magnificent grounds, close to the center of Cannes, Château Soligny effortlessly recalls a gilded, hedonistic era on the Côte d'Azur. Built during the French Riviera's golden age by the architect Rimbaud in 1868, this Belle-Epoque mansion is grand in every sense.

"It is unique and a total masterpiece," says Angie Delattre of Michaël Zingraf Real Estate, the exclusive affiliate of Christie's International Real Estate in the region, which is marketing the château. "Most comparable homes have been divided into apartments."

Château Soligny spans almost 14,000 square feet of space over five levels. The main reception rooms, which cover 1,937 square feet, are on the ground floor and lead onto wide terraces. One floor lower, at garden level, are four of the eight guest suites. These spacious, airy 538-square-foot bedrooms have their own distinctive design, a guest drawing room, and an opening on to the garden.

One of the most striking features is the stained-glass ballroom—designed by Gustave Eiffel for the owner Aristide Boucicaut, founder of Le Bon Marché department store, who bought the property in 1872.

Perched at the edge of the garden, overlooking the Mediterranean, the conservatory-like room was

used by Boucicaut for parties and entertaining as well as organ practice. The elegant space overlooks the Ile Sainte-Marguerite—the largest of the Lérins Islands, and the tranquil, light-filled room would also make an inspiring office.

The château, which was expanded by Boucicaut to include two further wings, as well as a water tower and chapel, makes the most of its stunning position overlooking Cap d'Antibes and the Bay of Cannes.

"There are 180-degree sea views and you can even see Saint-Tropez and the Estérel Massif," says Delattre.

Located in the most prestigious residential area of lower Californie—a highly sought-after district of exclusive homes—it is within walking distance of the town center. "You can be on the Croisette in five minutes," says Delattre.

Although close to the center, Château Soligny is a haven of peace. Stone paths meander through the grounds, passing streams, waterfalls, and contrasting garden designs—including a topiary.

Just 15 miles from Nice Côte d'Azur Airport, the beautifully restored château offers all the luxuries of modern living, while preserving the essence of a romantic time gone by.

//

Discover more about this special property, including further photography, at www.christiesrealestate.com/c48



//

Impressive grounds:
The majestic château nestles in nearly two acres of landscaped gardens, which include mature palms, trees, shrubs, and many exotic rare plants.



//

Special touches: High ceilings, large, airy rooms, and wide inviting terraces characterize the château, which also includes a home cinema as well as a wine cellar and tasting area.



“It is a total masterpiece. Most comparable homes have been divided into apartments.”
Angie Delattre



//
WORK OF ART

Château Soligny has recently been refurbished to an exacting standard and with great attention to detail—the two 861-square-foot master bedrooms on the first floor are finished in ebony, marble, and mother of pearl, and in an innovative touch, feature leather floors. The three bedrooms and staff suite on the second floor all enjoy wonderful views. Designer furniture from Baltus, Promemoria, and Ralph Lauren grace the rooms, and are all included in the sale.



Palace among the palms

Exuding grandeur and opulence, this palazzo in Beverly Park, Los Angeles, is the archetype of a classical-style masterpiece—a home fit for a king yet with plenty of charm and comfort

//

WORDS BY STEPHANIE JONES



//

VILLA FIRENZE

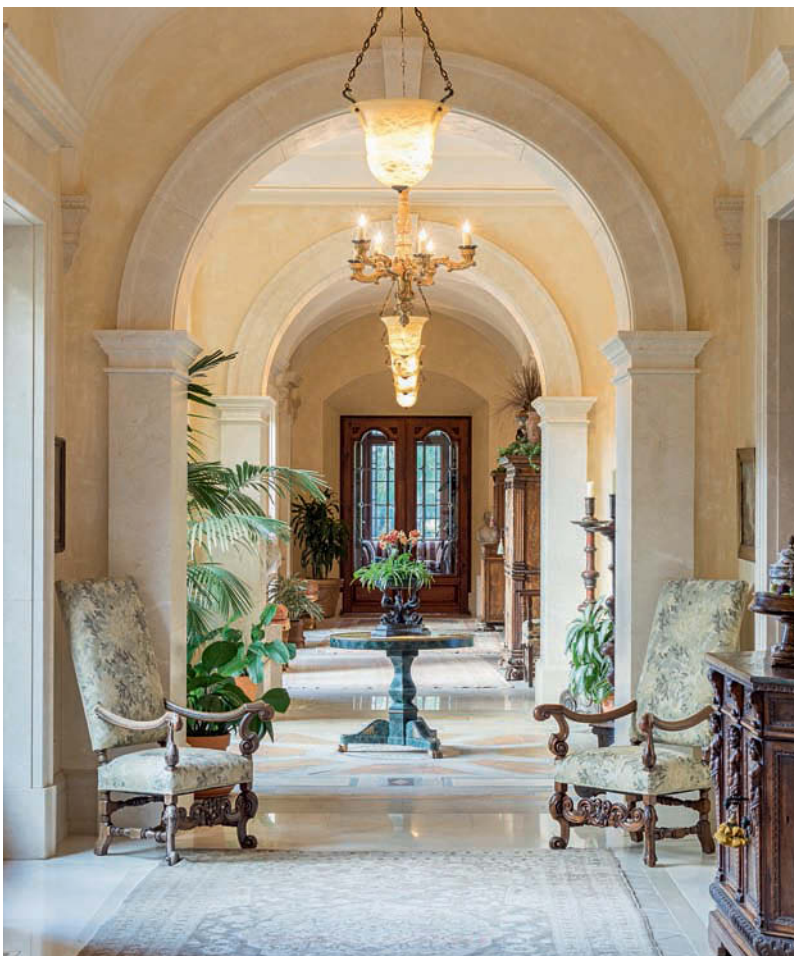
BEVERLY PARK

LOS ANGELES

UNITED STATES

www.hiltonhyland.com





//

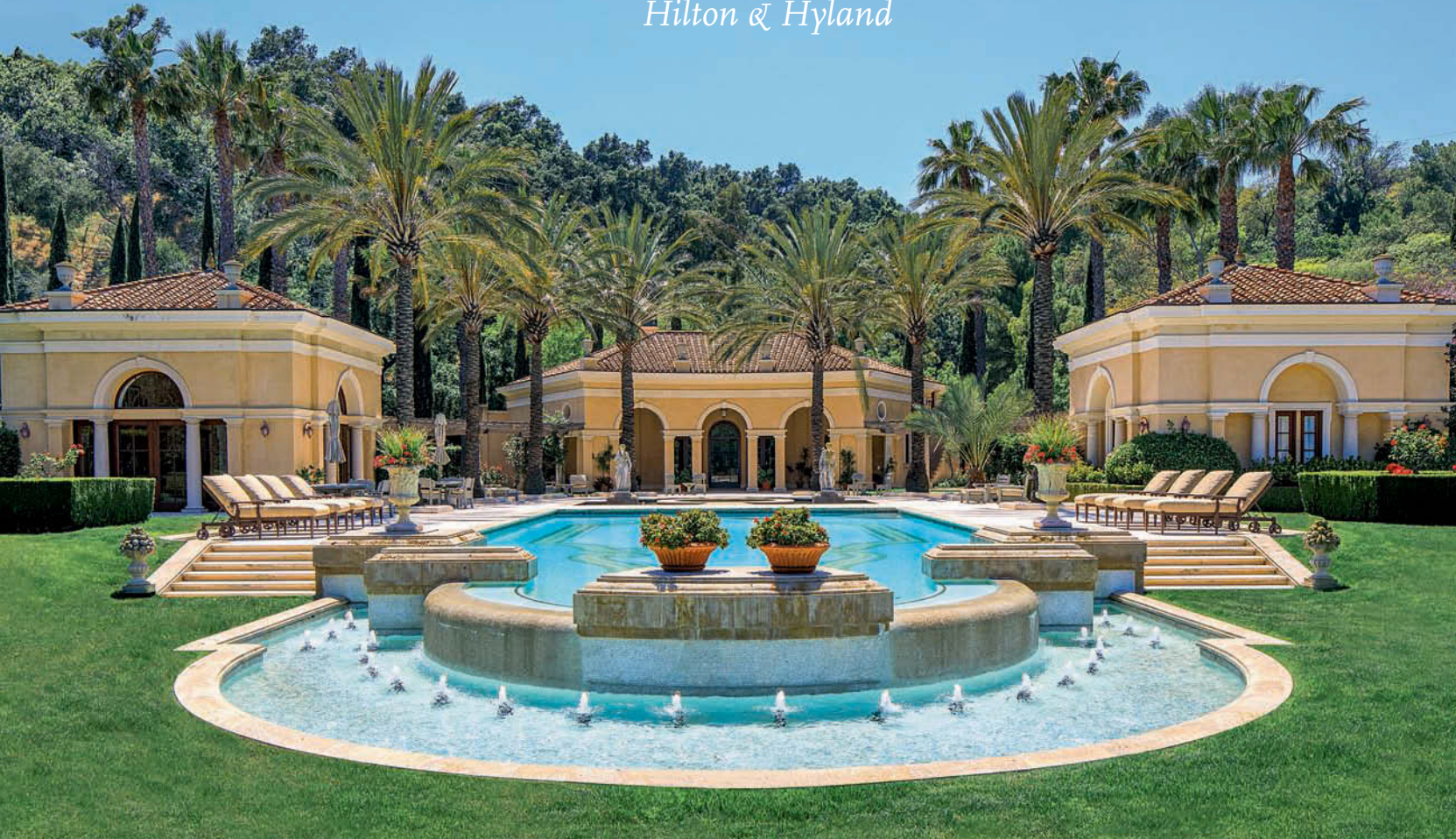
A modern-day classic: A love of old Europe is evident throughout the villa—the entire first floor is laid with limestone imported from a single quarry in France. Two *portes-cochères* that lead to the courtyard are replicated inside with an interior of marble arches, columns, and vaulted ceilings.

Authenticity is the essence of Villa Firenze. Love, too. Set on approximately 10 acres in North Beverly Park, high above the city of Beverly Hills, it's a dream residence offering the trappings and romance of a Tuscan palazzo, with every modern convenience and comfort for 21st-century living.

Architect William Hablinski, renowned for his take on classical architecture, was tasked with building a family home in the style of a classic Italian villa. The guiding principle was 'keeping it real.' It took a while—five years—to complete, but the result is impeccable.

Hablinski has built many marquee homes in the nation, but Villa Firenze is a standout. The estate comprises the main villa with its eight bedrooms and 11 baths spanning 28,660 square feet; a pool house and cabana; a two-story guest house just shy

“This is a one-of-a-kind project—the largest estate within Beverly Park.”
Hilton & Hyland



of 3,000 square feet; another two-bedroom guest cottage; and detached staff quarters. The estate's layout, scale, and symmetry are as they might have been in Renaissance Tuscany. "It is the meticulous attention to detail that makes Villa Firenze such a masterpiece," say Jeff Hyland and Rick Hilton of Hilton & Hyland Real Estate, the exclusive affiliate of Christie's International Real Estate in the region. "It is so authentic, and so big on character."

But authenticity doesn't only reign in the design. It applies to the workmanship too, with master craftsmen employed to use traditional techniques such as hand-mixing plaster colors and troweling inside and out by hand, not machine.

The interior decor, overseen by Raymond J Rippy from Interspec, San Diego, combines a neutral palette punctuated by rich natural wood and golden fittings. It looks and feels luxurious—stately but never stuffy. It is testament to Rippy and the

owners, who wanted Villa Firenze primarily for family comfort and gatherings, but also for entertaining—intimate parties as well as lavish banquets. "The owners built it for themselves as a true family compound, and it is perfectly suited to family use," the brokers note.

Villa Firenze sits in the exclusive gated community of North Beverly Park, a haven for those seeking anonymity. "This is a one-of-a-kind project," the brokers add. "Beverly Park is one of the largest collections of major estates in the nation, and Villa Firenze is the largest among them. But it isn't only spectacular to look at. It is so private and secure—you wouldn't even know you had neighbors, yet you're not even 10 minutes from Rodeo Drive and the city."

//

Discover more properties in Beverly Hills and Southern California at www.christiesrealestate.com



//

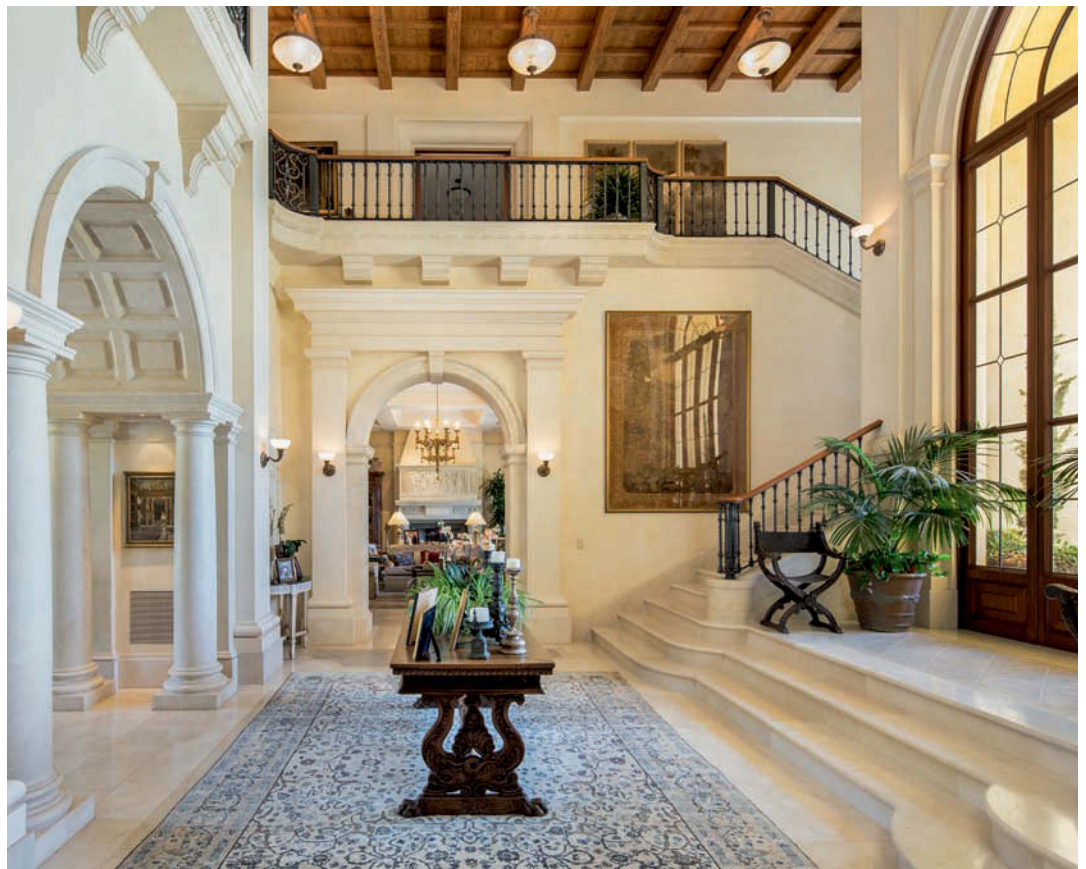
GLORIOUS LANDSCAPE

As with all great European-style estates, the grounds match the majesty of this residence. Accessible via its own private street with a 30-car courtyard, Villa Firenze has ornamental floral planting, manicured lawns, fountains, and terraces with canopies of established trees and Canary Island Palms stretching to the horizon. This is a place that's lived in and enjoyed, so there is a pool and tennis and basketball court for the sports-minded, plus walking paths, an arbor, and orchard for moments of quiet contemplation.



//

Romance and renaissance:
A twin staircase sweeps up to a galleried landing that presides over an elegantly arched entrance hall, with one entire wing dedicated to the owner's master suite.







//
TWO-BEDROOM APARTMENT
 MONTE CARLO
 MONACO HARBOR
 MONACO
www.hammerdraff.com

Harbor heights

Set in the glamorous heart of Monte Carlo, this lofty Monaco apartment provides a panoramic window to the splendor of the harbor below

//

PHOTOGRAPHY BY FREDERIC VASSEUR
 WORDS BY NICOLA VENNING

Monaco has always dazzled. A playground and haven for the rich and famous, this small city-state features high on the property wish lists of many.

One of the most sought after locations is the Harbor district, where this elegant two-bedroom apartment is situated. The chic home on the top of a 1960s Le Corbusier-style building has stunning views overlooking the principality's spectacular Mediterranean coastline.

"It is the only top-floor apartment available in the harbor area and in a super prime position," says Monica de Champfleury, director of Hammer Dräff Great Properties, an exclusive affiliate of Christie's International Real Estate.

The 2,000-square-foot apartment makes the most of its enviable location, with the dining and living area extending on three sides to give a panoramic vista. "It is like the prow of a boat with sea views left, right, and straight ahead," explains de Champfleury.

From the living room you can gaze onto sleek yachts, as well as the Prince's Palace, Le Rocher, and parts of the neighboring old town. "In the evening when the lights come on, the view becomes even more beautiful," de Champfleury adds.

Similar breathtaking vistas can also be enjoyed in the smart master bedroom and its adjoining contemporary-styled bathroom, which overlooks the harbor. In contrast, the guest bedroom and en suite look out over a green and leafy park. Decorated in an understated and sophisticated style, it is sold turnkey with all furniture included.

Formula One enthusiasts will be delighted to learn that the apartment also provides a prime spectating spot for the annual Monaco Grand Prix. "The views of the race are some of the best," says de Champfleury.

As well as an excellent concierge service, the home comes with three parking spaces, all large enough to accommodate luxury cars.

Idyllically situated on the glittering Côte d'Azur, against the dramatic backdrop of the Alpes-Maritimes, Monaco enjoys a mild Mediterranean climate—winters are 10°C on average and summers are a comfortable 24°C.

The full stretch of the French and Italian Rivas are within easy reach, as are the mountains. Nice and its international airport are just over half an hour away by road, although many opt to travel by speedier helicopter, and use Monaco's popular and highly convenient heliport.

Reigned by the Grimaldi monarchy since 1297, Monaco has long been the backdrop for a luxurious lifestyle. When movie actress Grace Kelly married Prince Rainer III more than 60 years ago, Monaco became the epitome of glamour—A timeless glamour that will never fade.

//

Discover more about this special property, including further photography, at www.christiesrealestate.com/c43



*"In the evening when the lights
come on, the view becomes
even more beautiful."
Monica de Champfleury*



//

PERFECTLY SITUATED

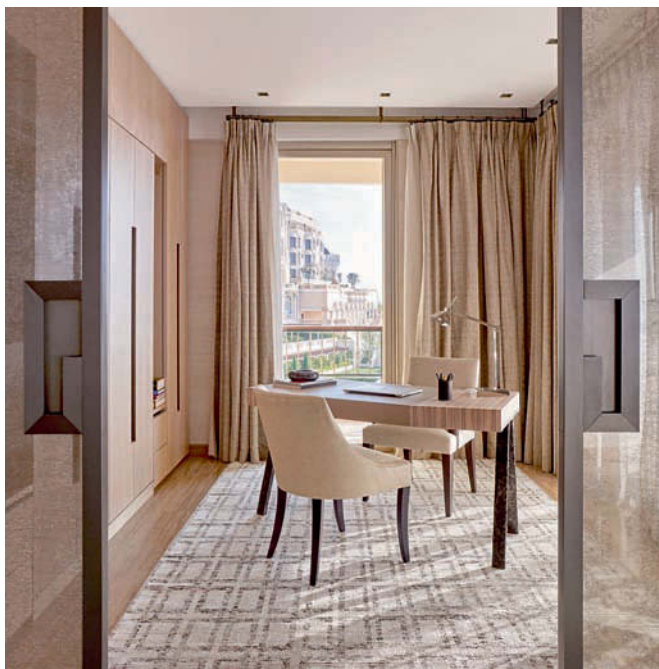
The apartment is conveniently close to the Yacht Club of Monaco—one the most iconic buildings in the principality—as well as the luxurious Thermes Marins Monte-Carlo spa, with its magnificent saltwater pool. Covering just three-quarters of a mile, compact Monaco is one of the safest places to live in the world, making a stroll through its streets a pleasant experience. It is possible to walk to boutiques, nightclubs, and of course, the renowned Belle Epoque-era Casino complex. Gourmets can also enjoy some of the best restaurants in the world.





//

Clever simplicity: Large floor-to-ceiling windows, gleaming marble floors, and warm wood finishes give the apartment a light and airy feel, while the office could potentially be used as a third bedroom.







//

FAWN BLUFF
BUTE INLET
BRITISH COLUMBIA
CANADA
www.faihwilsongroup.com

Rainforest playground

This stunning 340-acre private retreat on pristine Bute Inlet, 100 miles north of Vancouver, provides the ultimate west coast sporting-life experience

//

WORDS BY CATHERINE DUNWOODY



Fawn Bluff is located on unspoiled Bute Inlet—within the Emerald Edge and the Great Bear Rainforest—considered one of the grandest fjords on the globe, with jaw-dropping coastal scenery.

Think rugged mountains, crystal glaciers, emerald waters, with lush rainforest providing the ultimate natural sanctuary. World-class sport fishing and bountiful wildlife are also key attractions of this peacefully remote playground.

An abundance of fish include salmon, halibut, and lingcod, while sightings of black bears, cougars, eagles, and whales are commonplace.

“The first of many incredibly wonderful things about Fawn Bluff is that it is accessible year-round,

and yet is so very private and protected,” says Faith Wilson of Faith Wilson Group, the exclusive affiliate of Christie’s International Real Estate in Vancouver.

Wilson explains that Fawn Bluff, which is comprised of eight structures, was completed in 2008 and built as a pampering sanctuary for family and friends, but is ultimately all about fishing. “Being part of the Emerald Edge, one’s experiences are bound only by the imagination,” she says. “Heli up to a glacier for a gourmet picnic complete with starched linen tablecloths, and be back out on the open water in the afternoon in anticipation of catching a king salmon.”

A 45-minute flight from Vancouver via seaplane, Fawn Bluff and its private helipad are easily

//

Classic construction: The Founder’s Lodge (above and previous page) has a post-and-beam timber frame and metal roof, a lichen-covered ‘living stone’ wall and fireplace, sourced from Valemount, BC, and more than 4,000 square feet of living space.



accessible—just minutes away by helicopter or float plane from nearby Campbell River, an international port of entry. Wilson says the owners are known to fly from home to Whistler to ski. Meanwhile, in summer, the protected lake warms to swimming temperature, allowing waterskiing or just lounging dockside, reveling in the amazing vistas.

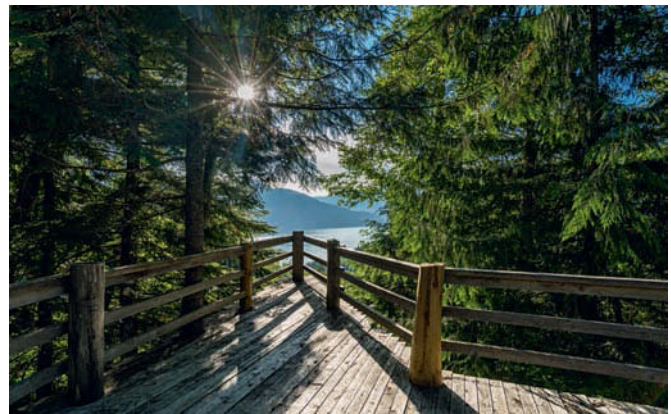
There are four generous guest buildings that together sleep up to 30, staff accommodation for eight, and a private three-mile road system. One of the property's most impressive buildings is the Founder's Lodge; a three-bedroom, four-bath home, which spans 4,070 square feet. Timber, stone, and reclaimed wood were used to create a quintessentially West Coast luxe look, with

just the right blend of rough-hewn and aspirational pieces. Meanwhile, the Lake Cottage is a fly-fisherman's dream home. Luxury log cabin style, with views of Leask Lake, the house is as charming as it is comfortable. A short, pine-scented stroll connects it to the Lodge. For big family gatherings, the Guest House is an ideal venue—a bunkhouse-style wilderness camp with six bedrooms.

And of course, with fishing the central focus throughout Fawn Bluff, each building offers large dining areas to celebrate the catch of the day in style.

//

Discover more about this special property, including further photography, at www.christiesrealestate.com/c58

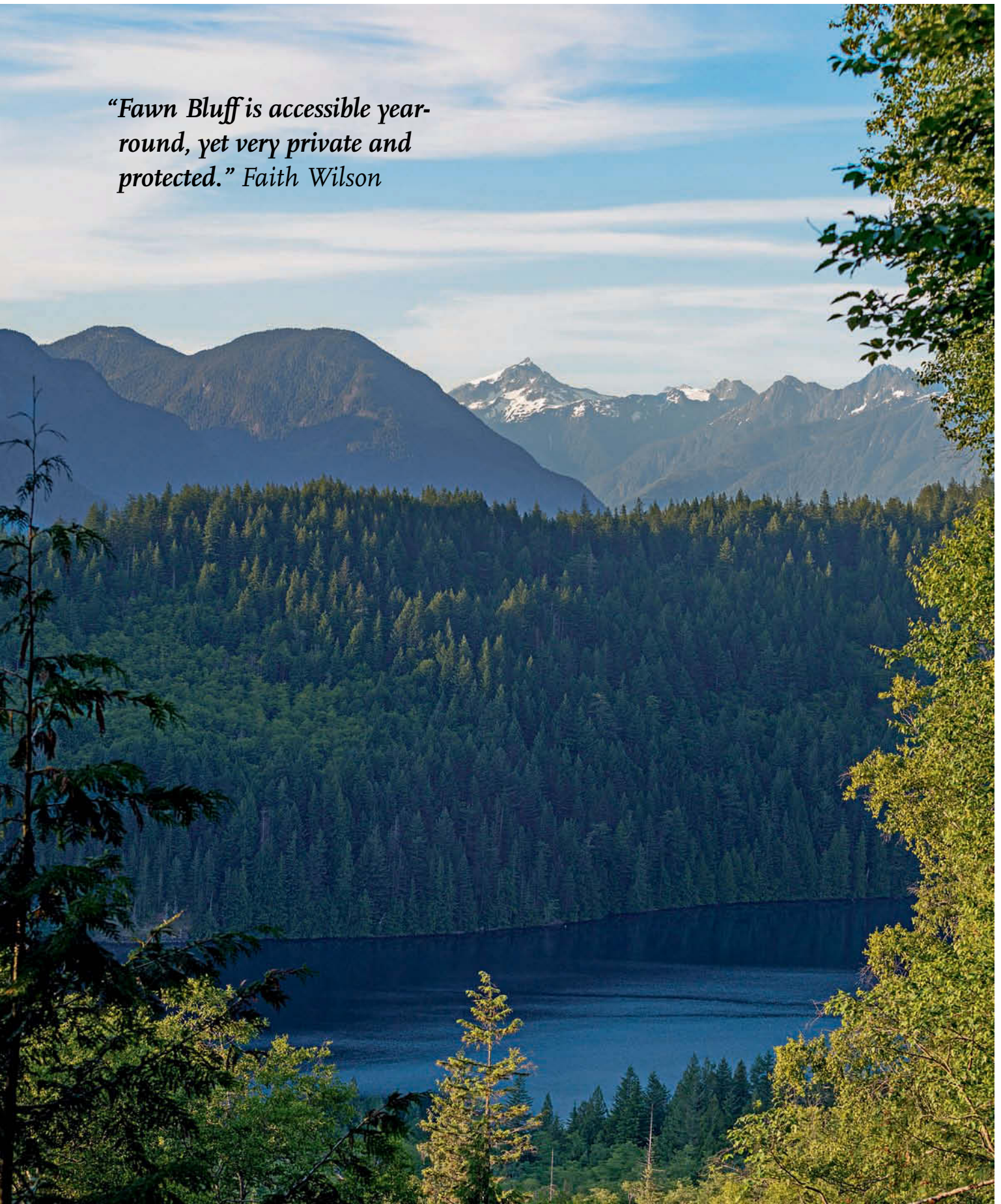


// RESORT POTENTIAL

While Fawn Bluff can be enjoyed privately as a family retreat, as it currently is, it can also operate as a fishing and wildlife resort similar to others in the area, such as Nimmo Bay and Langara Fishing Adventures in Haida Gwaii. A crucial component to enjoying such a grand, albeit ruggedly natural, destination is the personnel. "If the opportunity arose, I'm sure the staff would be pleased to stay on, as they have a high sense of pride and ownership," says Faith Wilson. This shines through in the guests' experiences too, as Peter Noire, Fawn Bluff's guest facilitator and co-ordinator, explains. "The ultimate goal is for guests to enjoy a truly memorable experience, and we often get told they've enjoyed the greatest day of their lives here," he says.

//
Waterfront living: The Lake Cottage is a scaled-down version of the Founder's Lodge and overlooks Leask Lake, providing the perfect opportunity to catch rainbow trout.

“Fawn Bluff is accessible year-round, yet very private and protected.” Faith Wilson





On top of the world

Villa Can Marés is a contemporary hideaway high above Ibiza's legendary nightlife, that skillfully pays homage to the island's architectural heritage

//

PHOTOGRAPHY BY CHRISTINA BULL
WORDS BY EMILEE TOMBS

//

VILLA CAN MARES
IBIZA TOWN
IBIZA
SPAIN

www.estelaexclusivehomes.com



Wonder is the word that comes to mind with this property,” says Estela Estévez of Estela Exclusive Homes, the exclusive affiliate of Christie’s

International Real Estate for Ibiza and Formentera. “The sea, the city, and the nature surrounding it merge to offer a sensation of both vast open space and tranquility,” she says.

Perched atop a lush, pine tree-covered hill above Ibiza Town, this seven-bedroom property has a unique aspect—just five minutes’ drive from the buzz of the island’s premier party spots, yet set deep within its natural surrounds, with no other properties around it. Renowned Madrid-based architect Alfonso Colón de Carvajal y Gorosábel has certainly taken advantage of this position, framing views of the sparkling Balearic Sea from every room, as well as from multiple ocean-facing terraces, sun decks, and balconies, creating an indoor–outdoor response to the island’s year-round temperate climate.

The main residence boasts five bedrooms and two living areas across 301,389 square feet, while the guesthouse, set apart from the primary home, has two bedrooms and its own terrace. Gardens of cacti, prickly pear, olive trees, and

palms merge with the heavily scented pine trees of the hillside, while the property itself is covered in a veil of climbing greenery.

“The area of Can Pep Simó, where the villa is situated, is one of the most sought after on the whole island,” says Estévez. “The main reason for this is its location, but also because it’s a protected area—no other properties can be developed here.”

Sheltered from harsh winds, this area of the Mediterranean also benefits from the presence of a marine plant called Oceanic Posidonia, which grows in the waters around the island and is responsible for the sea’s incredible clarity.

For yacht owners, nearby Marina Botafoch and Ibiza Nueva in Ibiza Town are two private marinas with added glamour: Upscale nightclubs are located inside or nearby in the form of Blue Marlin, Lío, and Pacha. Open year-round, Marina Botafoch provides 428 moorings of between 19 and 98 feet.

“One of the nicest things to do is go by boat to the smaller World Heritage Site of Formentera, which takes 15 minutes from Ibiza Port,” says Estévez. “It’s like stepping back in time. People fall instantly in love with this little island and never want to leave.”

//

Discover more about this special property, including further photography, at www.christiesrealestate.com/c47

“The area where the villa is situated is one of the most sought after on the whole island.” Estela Estévez



//

All in the name: Villa Can Marés was built in 2005 using typical Ibizencan materials—marés is the Mediterranean stone from which the island's original fincas, or farms, were made.



//

INDOOR-OUTDOOR LIVING

Through the property's 19th-century wooden doors, floor-to-ceiling sliding glass doors bring the outside in, creating a flow from one room to the next; a reception room on the ground floor opens out onto a wraparound terrace complete with infinity-edge pool, while the dining room on an upper level extends to another patio overlooking it, and upstairs a cozy lounge area acts as a sun terrace.





//
Calming influence: Elegant decor creates a serene aesthetic throughout, while oak floors, stone bath suites, and working fireplaces add rustic charm.



Cloaked in blue

Caught between sky and water, the graceful Commander's Point in Texas stands on one of the highest hills in the area, and casts its reflection in the still serenity of Lake Travis below

//

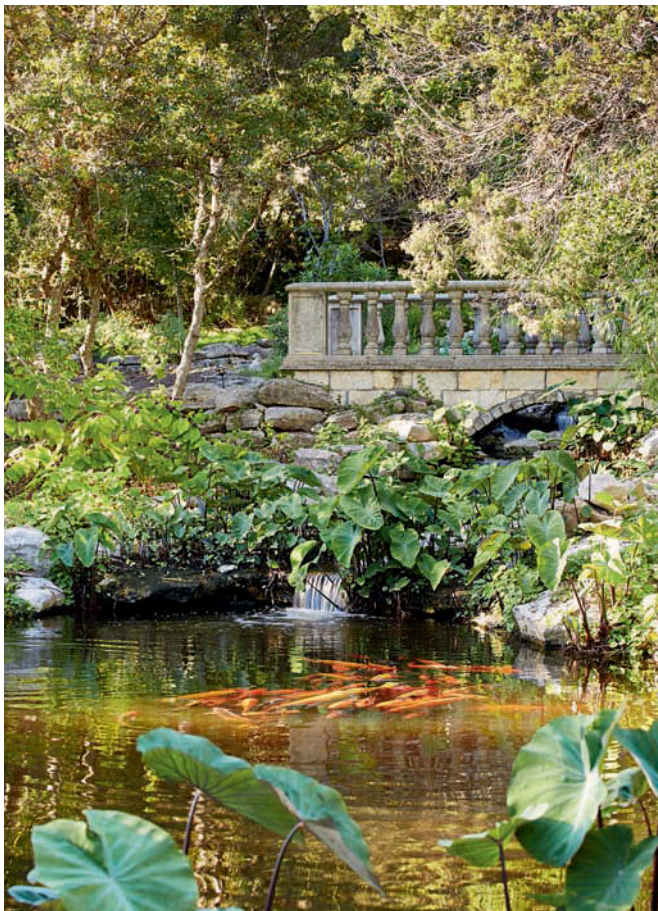
PHOTOGRAPHY BY LAURA MOSS
WORDS BY XENIA TALLOTIS



//

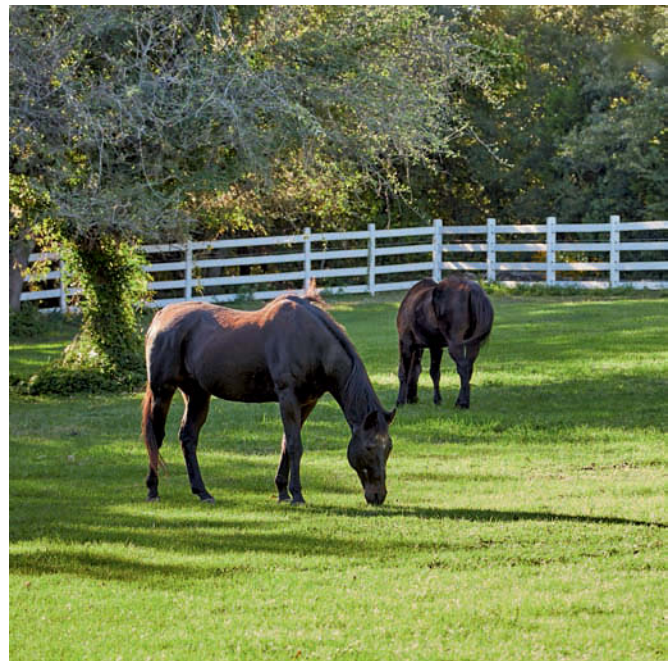
COMMANDER'S POINT
AUSTIN
TEXAS
UNITED STATES
www.moreland.com





//

In pursuit of pleasure: The estate has an abundance of outdoor facilities and opportunities for recreation, from woodland walks and saltwater swimming, to riding at the equestrian center.



Sitting on a hill above the soothing shores of Lake Travis, in 30 acres of meadow, landscaped gardens, ponds filled with koi carp, and woods thick with oak trees, is Commander's Point—the trophy estate of Hill Country, in Austin, Texas.

The magnificent, six-bedroom, six-bath property, built in 1996, is a European-style manor, with English influences, overlooking 60 miles of lake. Its design was a key attraction for owners Philip and Donna Berber. "I'm Irish and my wife is from London, and this house was originally built for an English family by a Welsh architect, so it felt instantly familiar—we just fell in love," says Philip. "We still love it, but now that our children have grown up, it's time to pass it on. That's the other main point about the property—even though it's grand, it's a family house first."

It's no exaggeration to say that the Berbers's idyllic weekend home, now on the market with Moreland Properties, the exclusive affiliate of Christie's International Real Estate in the region, is the most coveted estate in Austin—nothing else like it lies so close to downtown. "With all this land, you'd never think we're only a 25-minute drive from the city center," says Berber. "It's a sanctuary. As soon as we arrive we feel as if we're entering our own bubble: it's just us surrounded by spectacularly beautiful nature."

The estate provides a wealth of outdoor amenities, including an equestrian center with a huge barn, trails, paddocks, and lit riding arena. And of course, sailing: the property has its own boat dock with tram access, two slips, and a deck for entertaining.

Recreation is very much the order of the day inside the house, too, with the third story dedicated to play—"that's where we've got our media room, gym, and billiard and table tennis rooms," says Berber.

On the other two floors, every impeccable detail has been designed for gracious living, relaxation, and entertaining—from the statement staircase to luxurious materials and professional-grade kitchen.

"It's a case of no detail overlooked," says Berber.

"The original owner had lavish but exquisite taste. Everything is the absolute best that could be found. It had everything we wanted, even down to a helipad and two-bedroom guesthouse. But mostly, we wanted to buy it for the amazing views."

Ah yes, those remarkable panoramas of the lake, surrounding hills, and countryside. "Our vantage point gives us 270-degree views over Travis. We'll certainly miss living here, but as I said, it's time to hand it over for someone new to enjoy."

//

Discover more about this special property, including further photography, at www.christiesrealestate.com/c53





// EXQUISITE FURNISHINGS

Each room is finished in some of the finest materials available. Travertine flooring complements the limestone exterior of the house, while rich mahogany cabinetry, and a gorgeous spiral staircase leading to a catwalk that goes around the custom-built library, add drama and interest to the spacious rooms.





//

Sink back and relax: This luxurious country house is as much about comfort as it is entertainment—with the cozy den and roaring open fire providing an ideal family retreat in cooler seasons.

“It’s a case of no detail overlooked. Everything is the absolute best that could be found.” Philip Berber

//

SUI GENERIS

BRIELLE

NEW JERSEY

UNITED STATES

www.glorianilson.com





In a class of its own

Just a 90-minute drive from New York City and Philadelphia, this peerless residence is located on a charming and secluded waterfront

//

PHOTOGRAPHY BY NGOC MINH NGO
WORDS BY CLAIRE DOWDY

NETTIE EINHORN



Sitting on New Jersey's Manasquan River, tucked away in the small town of Brielle, Sui Generis offers myriad pleasurable ways to pass the time: a game of tennis, a few laps in the swimming pool, a stroll under the wisteria-covered pergolas in the Japanese garden, and fishing from the two docks.

For access to deeper water, the river leads directly to the Atlantic Ocean, making it one of the best waterfront spots on the eastern seaboard. Meanwhile the house, which presents yet more delights, embodies casual elegance.

Philanthropists Suzanne and Jeffrey Citron built it as their primary residence in 1996, and their dream home was created to the highest standards.

"There is nothing within 15 miles of this property that is in the same class in terms of location and amenities," says Brian Church, broker associate at



//

Standout feature: Residents and guests can step through double doors out to the riverbank from areas including the dining room (left) and garden room (above).

Gloria Nilson & Co. Real Estate, an exclusive affiliate of Christie's International Real Estate.

Latin for "of its own kind," Sui Generis blends design and lifestyle references from Beverly Hills, West Palm Beach, and Southampton, and was custom designed by architect Paul Barlo of local firm Barlo, Governale & Associates.

Life in this beautifully appointed riverside property couldn't be much sweeter. The 31,281-square-foot property is designed to make the most of its exquisite position, with plenty of access to, or views over, the garden and water. The house stands in a private spot on nearly three acres, which includes 240 feet of waterfront. In contrast, most of the neighboring properties of its type sit on between 50 and 100 feet of waterfront.

It spans four levels, including one below ground. Entry is via solid mahogany double-entry doors into a grand foyer. From here, there is access to a vast

amount of ground-floor living space: the living room, the garden room, the dining room, and an expansive double-height great room. For this stunning space, New York City-based designer Timothy MacDonald introduced a mahogany ceiling, Brazilian cherry flooring with walnut inlay, a floating staircase, a saltwater aquarium, and a double-sided fireplace.

Other rooms include a bar and billiards room with three aquariums, a theater with three-level lounge seating, and a wine cellar by Paul Wyatt of California.

"I have listed many luxury properties in the past 20 years, but none has been even remotely close to Sui Generis for the combination of benefits offered," says Church. "Although the home was built 18 years ago, the design is timeless."

//

Discover more about this special property, including further photography, at www.christiesrealestate.com/c54

“None of the properties I’ve listed over the years come even remotely close to Sui Generis.”
Brian Church



//
Move-in ready: Available turnkey, Sui Generis blends classic furnishings with magnificent details including wood ceilings, fireplaces, and river-facing terraces.



//

STEPS TO HEAVEN

From the foyer, a butterfly mahogany staircase leads up to the extensive sleeping quarters. In total, the property has nine bedrooms and 15 full bathrooms, and occupants of the master suite can spend time on their own veranda, which faces the river. There is a pair of guest suites on the second level, and on the top (third) floor, there's a gym with wall-to-wall carpeting, and a six-person infrared sauna made from cedar.



//

NO. 1

ELM PARK ROAD

LONDON

UNITED KINGDOM

www.struttandparker.com

New kid on the block

London's No. 1 Elm Park Road may be new, but it's perfectly at home in Chelsea's period surroundings thanks to its faultless design and first-class finishes

//

WORDS BY JOSH SIMS





ALEX WINSHIP

It doesn't take long to realize that No.1 Elm Park Road, in London's Chelsea, is truly an exceptional home. Not only is it located in one of the capital's prime residential areas, sited on an unusually wide plot, but it is also a detached single-family property—standing on the area previously occupied by a derelict prefab. It's expansive, at some 9,416 square feet over five floors. And, as you might expect from the address, it is even “on a pretty tree-lined street,” says James Forbes of Strutt & Parker, the exclusive Christie's International Real Estate affiliate that is marketing the property.

But what makes it such a rare opportunity is that it is a new build—meaning that every aspect of the interior space has been carefully considered from scratch. “It has meant that the house could be planned out in the most practical way,” says Forbes. “There's a lift, for example, and all the latest home-automation technology. The lateral design means there are high ceilings and lots of natural light. I've seen much bigger houses, but they have a lot of wasted space.”

The six-bedroom property offers two reception rooms, staff accommodation, off-street parking behind security gates for at least two cars, and a 10-year structural warranty. The architects—Squire and Partners, a company respected for its modernist

residential buildings, together with RIBA Award winners Hampson Williams—have also created a thoughtful design. There's a basement leisure area, complete with cinema room, steam room, sauna, gym, and 40-foot swimming pool—yet, as Forbes stresses, both ends of the area are cleverly bathed in natural light, allowing for a restorative experience.

From the front, the house's boxy form is, as Forbes describes, “a statement.” But by using sand-colored brick and allowing the window casements to subtly add interest, the house is still at home amid the surrounding, mostly period properties.

“The house exterior is already softening now that it's had time to weather a little bit,” says Forbes, “which promises that it will only grow in character.”

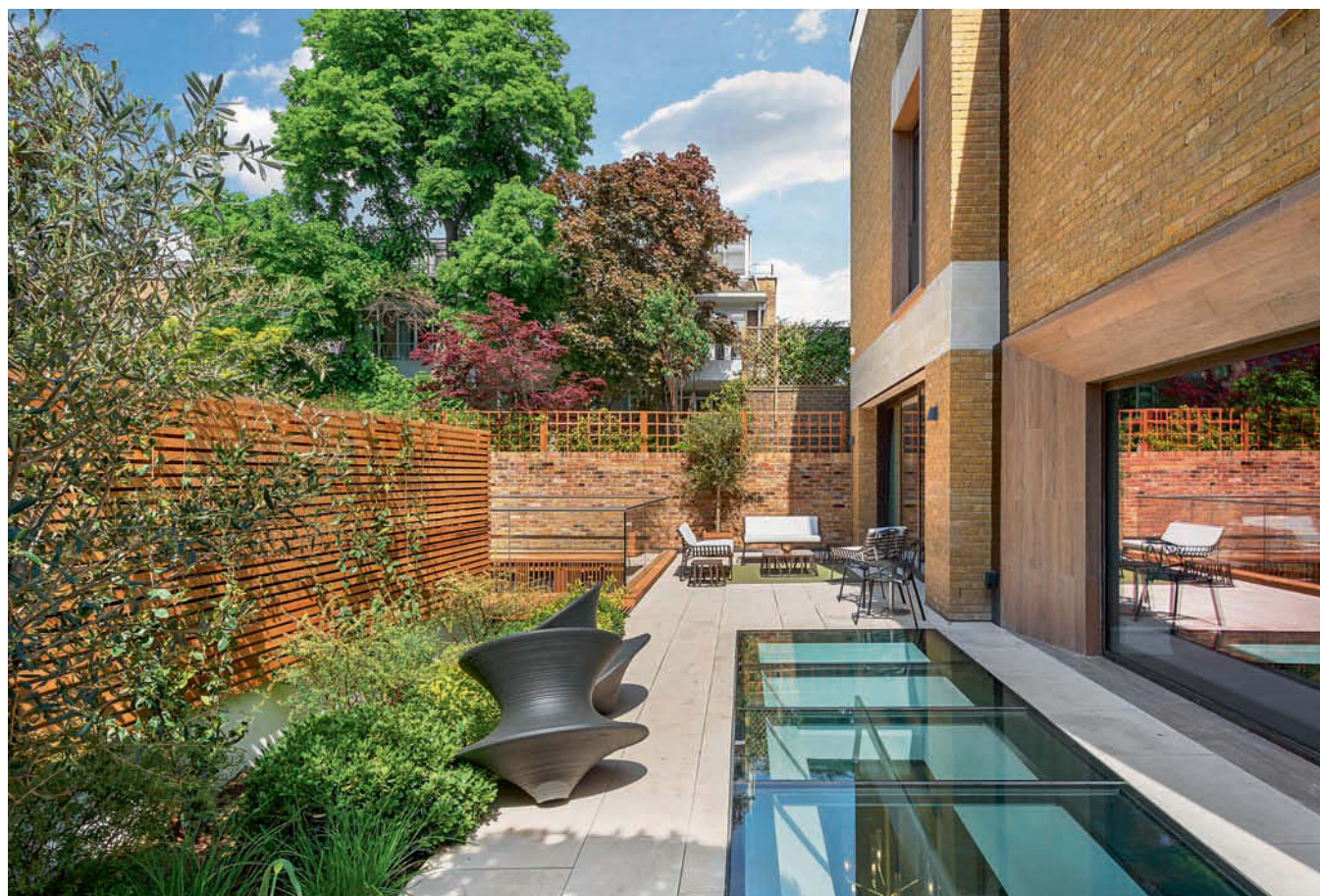
The best way to fully appreciate No.1 Elm Park Road's charm, however, is to visit it. It's then that the unusual nature of this new build comes across. “What makes this property really exceptional is not only that there's plenty of space, but it flows really well,” explains Forbes. “It doesn't feel overpowering in the way that some much grander houses do. No. 1 Elm Park Road offers the rarity of a new-build family home in this premium and historic location.”

//

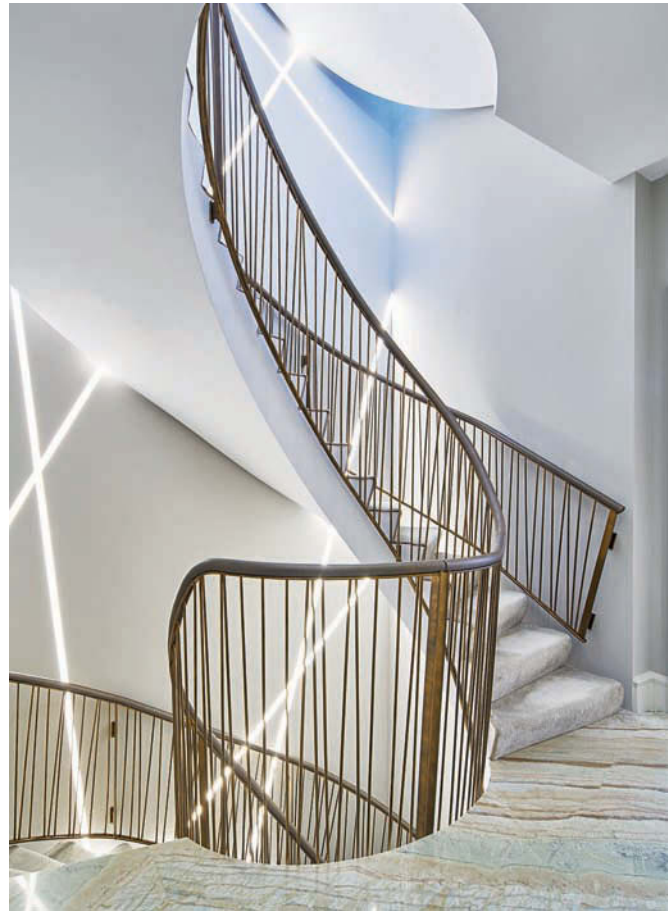
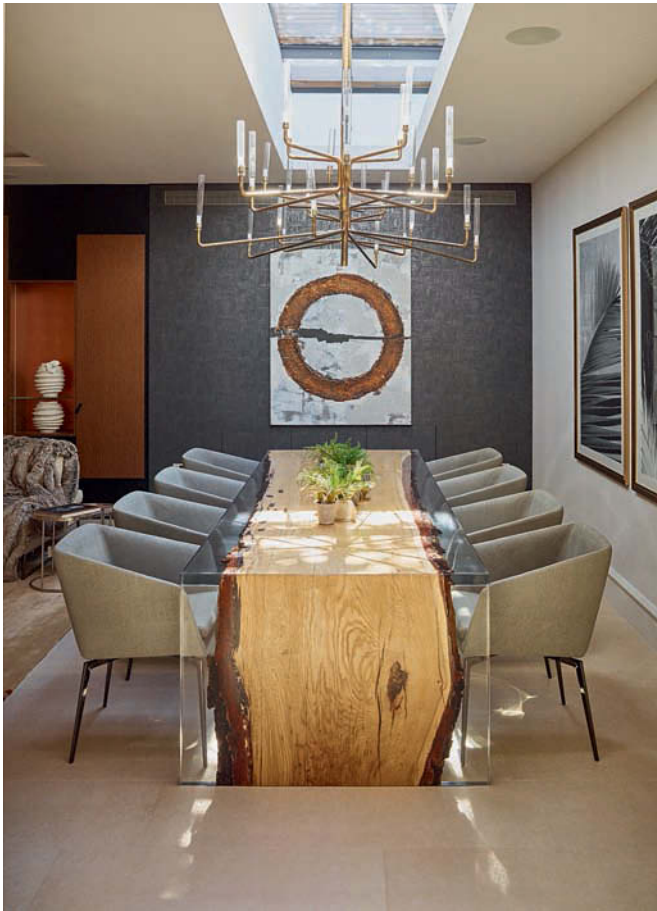
Discover more properties in London and the United Kingdom at www.christiesrealestate.com

//

Garden party: The dual-level garden makes use of the plot's full width (below), while the home's floor-to-ceiling windows bring the outside in.



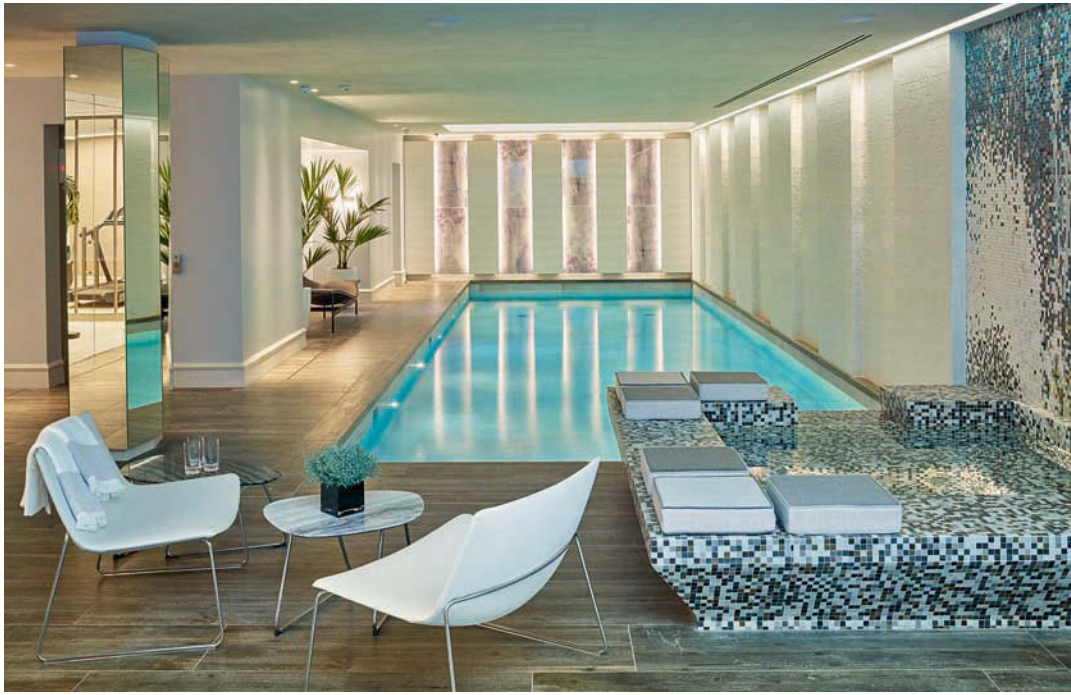




// BEAUTIFULLY FINISHED

The materials spec for the Vastu Design interior is exceptionally high—marble is book-matched, for example, a time-consuming process for a result many might not even notice. There's also a striking staircase, and the whole interior is replete with pleasing details—herringbone wooden or porcelain flooring, antique brass door handles, maple veneer joinery, and fabric wall coverings. There's also under-floor heating and air conditioning throughout.





//
Uplifting haven: Clever use of light underground means the “basement spa feels genuinely tranquil, a nice place to spend time in,” says James Forbes of Strutt & Parker.

“No. 1 Elm Park Road offers the rarity of a new-build family home in this premium and historic location.”

James Forbes



ALEX WINSHIP, TIMOTHY SOAR



Set in stone

Full of period features, craftsmanship, and old-world charm, this Canadian manor house offers a rural retreat on the doorstep of downtown Montréal

//

PHOTOGRAPHY BY ROBIN STUBBERT
WORDS BY NICOLA VENNING



//

COUNTRY MANOR

WESTMOUNT

MONTREAL

CANADA

www.profusionimmo.ca





Homes that combine the tranquility of the countryside with the buzz of the city are hard to find. However, this estate manages to do just that. The traditionally styled house is situated in Westmount—an affluent neighborhood on the Island of Montréal, which is only a 10-minute stroll from the city center.

“People aspire to live here and it is an extremely sought-after area,” says Vivian Grant of Profusion Realty Inc., the exclusive affiliate of Christie’s International Real Estate in the region, which is marketing the property. “Westmount has a lovely,

village-like quality and is close to everything. Originally, it was an area where a lot of English-speaking Quebecers lived, and now it is very cosmopolitan,” she adds.

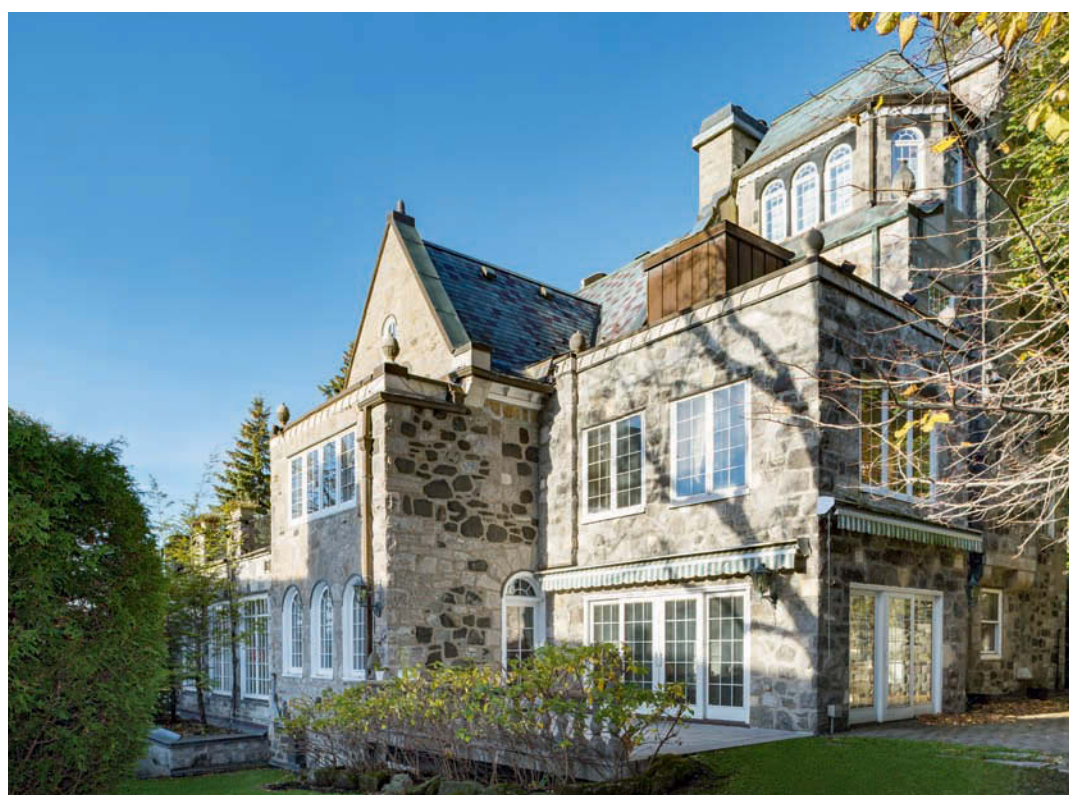
Small shops, boutiques, excellent restaurants, and the delightful shopping districts of Victoria Village and Green Avenue are all on the doorstep. The home is also near several highly regarded private schools. “There is a lovely community feel to the area,” says Grant, “and it is very popular with families.”

Reminiscent of an English country manor, the house is set in 20,000 square feet of grounds—larger than usual for the area. Sited on the slopes of Mount Royal, it also has views over Montréal.



//

Restful vistas: Surrounded by greenery, Westmount Park, and the more rugged 500 acres of Mount Royal Park—where it is possible to go cross-country skiing without leaving the city—are both within strolling distance.



A sweeping drive leads to the house, which has a well-appointed grand salon, library, and garden room boasting period details such as open fireplaces, curved stone windows, and vaulted ceilings.

The formal dining room, which easily seats 16, is “perfect for entertaining,” says Grant. “The owners have hosted many dignitaries here,” she adds.

Extending over four floors are seven bedrooms and six modern baths, small offices, and a family room, with an additional airy private office situated on the top floor.

Coziness and relaxation are as important as elegance in this house, and there is an informal breakfast room, inviting bar, billiard room, and

indoor barbecue area. A contemporary kitchen with marble floors and granite worktops, and two powder rooms located conveniently on the ground floor add to the luxurious feel.

There is also an outdoor swimming pool, which Grant says is “extremely unusual for the area,” plus a gym and sauna.

“With this lovely home, you are getting the best of everything: location, beauty, and services,” says Grant. “It really is unique in Montréal.”

//

Discover more about this special property, including further photography, at www.christiesrealestate.com/c55

“With this lovely home, you are getting location, beauty, and services. It really is quite unique.”
Vivian Grant



//

Elegant spaces: Built in 1927, this home has an impressive 8,000 square feet of living space and is an exemplary reflection of the craftsmanship that flourished at the time.



//

A FLOOR TO BEHOLD

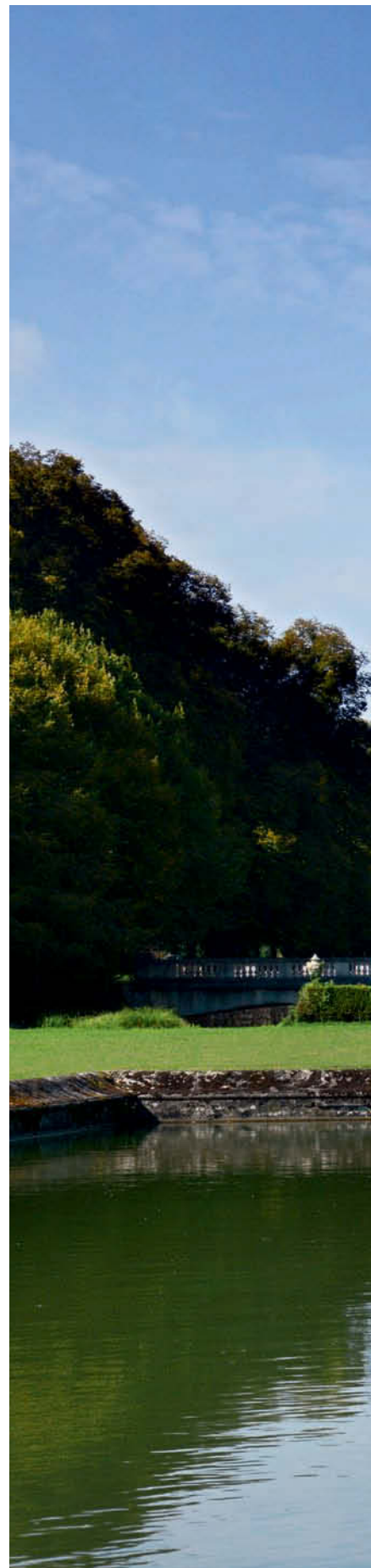
One of the manor's most outstanding features is the original polished mahogany floor that flows throughout the house. This exquisite wood, which is also echoed in the wainscots, beams, and coffered ceilings, helps to create a warm and welcoming family home. There is also a wood-paneled elevator that connects all four floors, as well as the basement, staff quarters, and three-car garage. "It is an old-world and gracious home," says Vivian Grant of Profusion Realty Inc.

Reflected glory

Located just 30 miles from Paris, Château du Marais survived the French Revolution intact and remains one of the finest examples of Louis XVI-style architecture

//

WORDS BY CLAIRE DOWDY



//

CHATEAU DU MARAIS

LE VAL-SAINT-GERMAIN

ILE-DE-FRANCE

FRANCE

www.belles-demeures-de-france.com





Château du Marais is an exquisite piece of history. In 1772, French nobleman Jean Le Maître de La Martinière commissioned the Parisian architect Jean-Benoît-Vincent Barré to build a property around a stunning 1,800-foot-long, 180-foot-wide reflecting pool, known as “The Mirror.” Barré was one of the 18th century’s most significant architects, and is credited with creating the Louis XVI style of architecture.

Completed in 1779, the building was “considered one of the most beautiful châteaux of the Louis XVI period, one of the masterpieces,” says Lionel Macaire of Belles Demeures de France, the international arm of Daniel Féau Conseil Immobilier, an exclusive affiliate of Christie’s International Real Estate.

The château of yellow ochre stone, its outbuildings, and parkland are all listed as a national historic

monument, and the site retains features from two former châteaux. Dungeons and moats remain from the original 14th-century structure, as do the 16th-century plantings of the 247-acre parkland.

With its proximity to Paris and Orly Airport, the estate has any number of potential uses, whether that’s as a primary residence, holiday retreat, or venue for unforgettable parties.

The château, 30 miles southwest of the capital, is reached via a grand drive lined by plane trees and bordered by around 74 acres of fields and woodland. Original features abound on the main floor—or *piano nobile*—which houses a grand reception room, two drawing rooms, a dining room, three paneled apartments, a kitchen, and a chapel.

Some 13,993 square feet of outbuildings flank the property. These include the original stables, the old dungeons, two pavilions, and a mill, which was renovated in the 19th century in the neo-Gothic

//

Fit for a king: The main building has 9,407 square feet of living space on each principal floor, meaning life can be played out on a grand scale.



style, and works well as an exhibition space. The park was transformed into an English-style garden in the early 20th century by Achille Duchêne—the landscape designer most in demand among French society at the time—for the Marquis de Castellane.

Unsurprisingly, the château has played host to a swathe of famous visitors, including François-Auguste-René, vicomte de Chateaubriand, one of the country's first Romantic writers.

Many were as impressed then as visitors are in the 21st century. In his diary, the Marquis de Bombelles, a close relation of Marie Antoinette, wrote that “a mere civilian has built a château worthy of royalty.” Meanwhile, the poet Baron de Frénilly called Le Marais a “fairy castle.” And for Macaire? “It’s a jewel.”

//

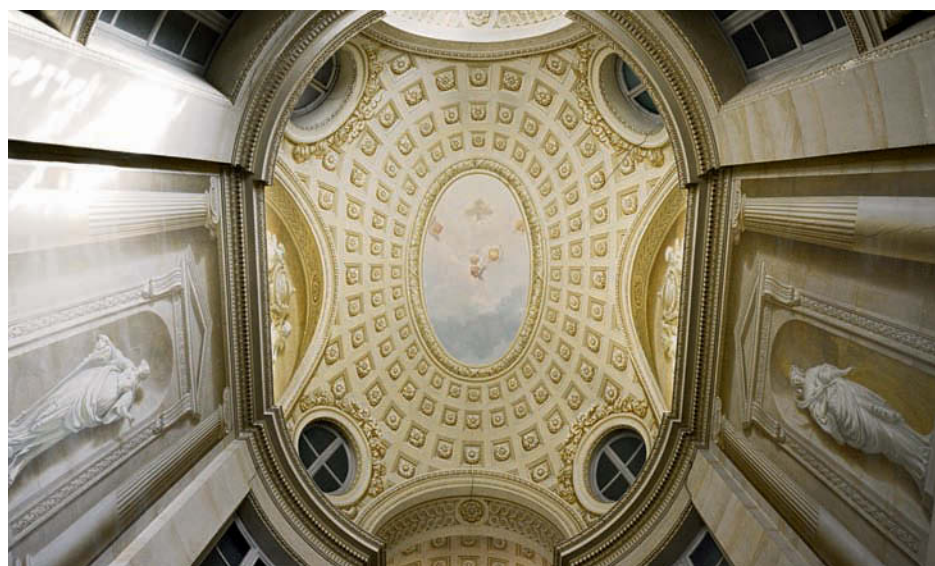
Discover more properties in Paris and the rest of France at www.christiesrealestate.com

“It was considered one of the most beautiful châteaux of the Louis XVI period.”
Lionel Macaire



//

Higher purpose: On the second floor, a wide landing gives access to 11 elegant bedrooms, eight baths, and three boudoirs. Above that on the top floor is a four-room apartment.



//

HEAVENLY DESIGNS

The chapel is an architectural gem in its own right. It features a *trompe l'oeil* decor attributed to 18-century Belgian painter Piat Sauvage, who was a member of France's Royal Academy of Painting and Sculpture. Parisian architect Jean-Benoît-Vincent Barré also brought in the best sculptors of the period to craft intricate friezes throughout the château, and fashioned an audacious two-level glazed passageway, which spans the moats and connects the residence with its medieval foundations. Classic 18th-century design elements include a mansard roof and a recessed limestone façade.





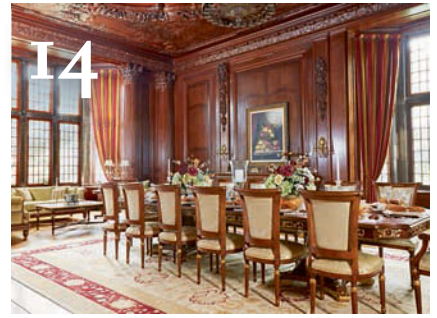
//

Country manor in Montréal:
Situating in affluent Westmount,
this Canadian manor house
features 8,000 square feet
of traditionally styled living
space, including an elegant
dining room, which
comfortably seats 16.

ROBIN STUBBERT

The luxury directory

Get in touch with the exclusive affiliates of Christie's International Real Estate



14

//

Darlington

Mahwah, New Jersey, United States
Price upon request

Special Properties Real Estate Services, LLC

www.specialpropertiesres.com
Sonja Cullaro
+1 201 675 5799
scullaro@specialproperties.com

Christie's International Real Estate

www.christiesrealestate.com
Kathleen Coumou
+1 212 468 7140
kcoumou@christies.com



22

//

Paris townhouse

Champ de Mars, Paris, France
Price upon request

Belles Demeures de France (Daniel Féau Conseil Immobilier)

www.paris-fineresidences.com
Marie-Hélène Lundgreen
+33 1 53 23 81 81
mhl@bdfrance.fr



28

//

Seend Park

Wiltshire, England, United Kingdom
£4,500,000

Strutt & Parker

www.struttandparker.com
Edward Lucas
+44 20 7318 5190
edward.lucas@struttandparker.com



34

//

Glen Edyth Place

Casa Loma, Toronto, Canada
Price upon request

Chestnut Park Real Estate Limited, Brokerage

www.chestnutpark.com
Jimmy Molloy
+1 416 925 9191
jimmymolloy@rogers.com



40

//
La Garibaldina

Costa Smeralda, Sardinia, Italy
Price upon request

Immobilsarda Srl

www.immobilsarda.com

Julia Bracco

+39 0789 909000

juliabracco@immobilsarda.com

Christie's International Real Estate

www.christiesrealestate.com

Charlotte Delaney

+44 20 7389 2551

cdelaney@christies.com



46

//
Wyldwoode

Lake Forest, Illinois, United States
Price upon request

CONLON: A Real Estate Company

www.conlonrealestate.com

Rachael Mann

+1 312 401 9588

rachael@conlonrealestate.com

Christie's International Real Estate

www.christiesrealestate.com

Rick Moeser

+1 561 805 7327

rmoeser@christies.com



52

//
Château Soligny

Cannes, Côte d'Azur, France
Price upon request

Michaël Zingraf Real Estate

www.michaelzingraf.com

Michaël Zingraf Real Estate Cannes

+33 4 93 39 77 77

cannes@michaelzingraf.com



58

//
Villa Firenze

Beverly Park, Los Angeles, United States
Price \$165,000,000

Hilton & Hyland Real Estate

www.hiltonhyland.com

Jeff Hyland

+1 310 278 3311

jeff@hiltonhyland.com



64

//
Monaco apartment

Monte Carlo, Monaco Harbor, Monaco
€22,500,000

Hammer Draff Great Properties

www.hammerdraff.com

Monica de Champfleury

+377 97 97 63 33

secretariat@hammerdraff.com



70

//
Fawn Bluff

Bute Inlet, British Columbia, Canada
C\$28,800,000

Faith Wilson Group

www.faithwilsongroup.com

Faith Wilson

+1 604 224 5277

faith@faithwilsongroup.com

//

Wylldwoode: Designed by architect Harrie T Lindeberg, whose work defined the American Country House era, Wylldwoode sits serenely at one with its Lake Forest, Illinois surroundings.





//

Seend Park: Original Georgian details abound throughout this wonderful country house in Wiltshire, UK, including parquet wood floors, shutters, and ornamental ceilings.

ALEXANDER JAMES



//

Villa Can Marés

Ibiza Town, Ibiza, Spain
Price upon request

Estela Exclusive Homes
www.estelaexclusivehomes.com
Estela Estévez
+34 971 931 562
ee@estelaexclusivehomes.com



//

Commander's Point

Austin, Texas, United States
\$13,900,000

Moreland Properties
www.moreland.com
Eric Moreland
+1 512 480 0844
Eric@moreland.com



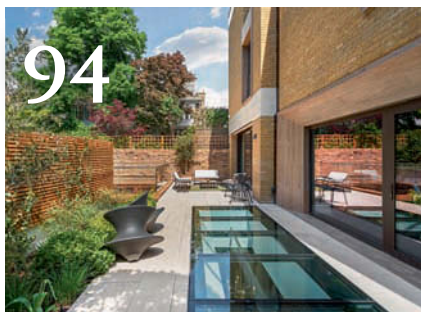
//

Sui Generis

Brielle, New Jersey, United States
Price \$12,850,000

Gloria Nilson & Co. Real Estate
www.glorianilson.com
Brian Church
+1 732 449 0671
brianchurch@live.com

Christie's International Real Estate
www.christiesrealestate.com
Kathleen Coumou
+1 212 468 7140
kcoumou@christies.com



//

No. 1 Elm Park Road

Chelsea, London, United Kingdom
Price upon request

Strutt & Parker
www.struttandparker.com
James Forbes
+44 20 7235 9959
james.forbes@struttandparker.com



//

Montréal country manor

Westmount, Montréal, Canada
Price C\$8,000,800

Profusion Realty Inc.
www.profusionimmo.ca
Brian & Vivian Grant
+1 514 935 33 37
bgrant@profusionimmo.ca

Christie's International Real Estate
www.christiesrealestate.com
Kathleen Coumou
+1 212 468 7140
kcoumou@christies.com



//

Château du Marais

Le Val-Saint-Germain, Ile-de-France, France
Price upon request

Belles Demeures de France
(Daniel Féau Conseil Immobilier)
www.belles-demeures-de-france.com
Lionel Macaire
+33 1 53 23 80 47
lmacaire@bdfrance.fr

Christie's International Real Estate
www.christiesrealestate.com
Helena De Forton
Sandrine Kockum
+44 20 3824 1951
HdeForton@christies.com
skockum@christies.com

Editorial, design, and production

Sarah Bravo, Jules Rogers, Kitty Finstad,
Michael Branthwaite, Donna Hardie,
Ruth Railton, Eva Peaty, Ceri James,
Clare Limpus, David Sharman,
Jennifer Bourne, James Taggart

For Christie's International Real Estate

Kaysha Velarde-Wilson
kvelarde@christies.com

CHRISTIE'S
INTERNATIONAL REAL ESTATE

Publishing

August Media Ltd
Sebastian Costa
82 Baker Street, London W1U 6AE
+44 (0)20 7935 4426
info@augustmedia.com



The opinions herein are those of the authors or persons interviewed and do not reflect the views of Christie's International Real Estate or August, a trading division of Publicis Limited. Photography and material in the publication may not be reproduced in any form without the permission of Christie's International Real Estate, Inc. All properties featured in this booklet are subject to prior sale, change, or withdrawal without notice. All details featured in this booklet were correct at the time of press. Christie's International Real Estate, Inc. believes all material and editorial to be correct, but assumes no legal responsibility for accuracy.

© Christie's International Real Estate 2018

Northeast United States & Canada

New York
20 Rockefeller
Plaza, New York
New York 10020
USA
+1 212 468 7182

Kathleen Coumou
Executive Director,
Northeast Region
+1 212 468 7140
kcoumou@christies.com

Western United States & Canada

Los Angeles
633 North Camden Drive
Beverly Hills
California 90210
USA
+1 310 385 2690

Zackary Wright
Executive Director,
Western Region
+1 310 385 2690
zwright@christies.com

Southeast, Southwest, Central & Mountain United States, Caribbean & Latin America

Palm Beach
313 1/2 Worth Avenue
Suite 4B
Palm Beach
Florida 33480
USA
+1 561 805 7327

Rick Moeser
Executive Director,
Southeast, Southwest,
Central & Mountain
Region, Caribbean
& Latin America
+1 561 805 7327
rmoeser@christies.com

Europe, Russia, Middle East, India & Africa

London
8 King Street
St James's
London SW1Y 6QT
UK
+44 20 7389 2522

Helena De Forton
Head of Regional
Operations, EMERIA,
Global Head of Affiliate
Services
+44 20 7389 2992
HdeForton@christies.com

Asia Pacific

Hong Kong
22nd Floor
Alexandra House
18 Chater Road
Central, Hong Kong
+852 2978 6788

Zackary Wright
Executive Director,
Asia Pacific
+852 2978 6788
zwright@christies.com

//

Darlington: The gloriously renovated Jacobean estate close to New York City has all the amenities of a five-star hotel, including a sumptuous afternoon tea room.

BOUCHERON

PARIS



HIVER IMPÉRIAL
HIGH JEWELRY COLLECTION



FIRST JEWELER OF THE PLACE VENDÔME

In 1893, Frédéric Boucheron is the first of the great contemporary jewelers to open a Boutique on the Place Vendôme